



BALDWIN'S

The Name for Numismatics

Auction Number 78

Tuesday 7 May 2013



The
DAVID FORE
Collection

Coins of British India
Part 1

To be held in the Council Chamber

The Chartered Institute of Public Finance and Accountancy

FREE LIVE INTERNET BIDDING



Baldwin's are pleased to continue offering their live video internet bidding at:

www.the-saleroom.com/baldwins

For our auction you will be able to bid over the internet in real-time with sound and video: the lots appear on your computer screen as they are being sold in the room and you can hear the auctioneer selling each lot – he is aware of your bids as you make them.

Please note:

- You will need to register with an email address and password in order to view the auction
- You will need to supply Credit Card details before being able to bid in the auction
- Invoices will be sent out in the normal way directly from Baldwins
- NO additional fees will be incurred by using this service

For more information about this service or for help in registering on the website:
Telephone: +44 (0)870 162 1411 or email liveauctions@atgmedia.com

11 Adelphi Terrace
London WC2N 6BJ
Telephone: +44 (0)20 7930 9808
Fax: +44 (0)20 7930 9450
email: auctions@baldwin.co.uk



BALDWIN'S
The Name for Numismatics

OUR SPECIALIST TEAM

Ian Goldbart	Managing Director	Ian@baldwin.co.uk
Edward Baldwin	Chairman European, Russian, Colonial and Oriental Coins Military Medals and Decorations, Numismatic Books	Edward@baldwin.co.uk
Seth Freeman	Director Tokens and Banknotes	Seth@baldwin.co.uk
Steve Hill	Director English hammered and milled Coins	Steve@baldwin.co.uk
Dimitri Loulakis	Director English, European and Latin American Coins, modern Greek Coins	Dimitri@baldwin.co.uk
Andre de Clermont	Islamic Coins	Andre@baldwin.co.uk
Graham Byfield	Indian and Islamic Coins, Commemorative Medals	Graham@baldwin.co.uk
Paul Hill	Ancient Greek, Roman and Byzantine Coins	Paul@baldwin.co.uk
Caroline Holmes	Numismatic Books	Caroline@baldwin.co.uk
David Kirk	Military Medals and English Coins	David@baldwin.co.uk
Julie Lecoinde	Numismatic Specialist	Julie@baldwin.co.uk
Matt Curtis	Auction Office Manager	Matt@baldwin.co.uk
Sam Weedall	Auction Co-Ordinator	Sam@baldwin.co.uk
Domoni Mainstone	Auction Administrator	Domoni@baldwin.co.uk
Caroline Newton	PR and Marketing Manager	CarolineNewton@baldwin.co.uk

EXTERNAL CONSULTANTS

Daniel Fearon	Commemorative Medals	Daniel@baldwin.co.uk
Stan Goron	Indian Coins	Stan@baldwin.co.uk
Peter Donald	Byzantine Coins	Peter@baldwin.co.uk

WORLDWIDE REPRESENTATIVES

Mr Randy Weir	P O Box 64577, Unionville, Ontario, L3R 0M9 Canada	RandyWeir@baldwin.co.uk
Mr Ma Tak Wo	Unit 2A, 9 th Floor, China Insurance Building, 48 Cameron Road Tsim Sha Tsui, Kowloon, Hong Kong	MaTakWo@baldwin.co.uk



BALDWIN'S

The Name for Numismatics

Auction Number 78

Tuesday 7 May 2013

The
DAVID FORE
Collection

of

Coins of British India

Part 1

Proofs, Restrikes and Off-Metal Strikes

CIPFA

3 Robert Street

Adelphi, London, WC2N 6BH

The Council Chamber

10.00 am precisely

view this auction and send bids via the internet:

WWW.THE-SALEROOM.COM/Baldwins

WWW.SIXBID.COM

WWW.NUMISBIDS.COM

A H Baldwin & Sons Ltd, 11 Adelphi Terrace, London WC2N 6BJ

Telephone: +44 (0)20 7930 9808, Fax: +44 (0)20 7930 9450, email: auctions@baldwin.co.uk

www.baldwin.co.uk

Date of Sale **Tuesday 7 May 2013**
Session One: 10.00am Lots 1 - 260
Session Two: 1.00pm Lots 261 - 724

Public View **Monday 6 May 2013 [British Bank Holiday]**

A H Baldwin and Sons Ltd
11 Adelphi Terrace, London WC2N 6BJ

10.00 am - 4.00 pm

Viewing at all other times **by appointment** at
11 Adelphi Terrace during the preceding two weeks
9.30 am - 4.30 pm, Monday to Friday

Order of Sale	1/12-Annas	Lots 1 - 89
	½-Pice	Lots 90 - 169
	¼-Anna	Lots 170 - 255
	Pice	Lots 256 - 260
	½-Anna	Lots 261 - 297
	Anna	Lots 298 - 351
	2-Annas	Lots 352 - 442
	¼-Rupee and 4-Annas	Lots 443 - 516
	½-Rupee and 8-Annas	Lots 517 - 592
	Rupee	Lots 593 - 694
	5-Rupees	Lots 695 - 700
	10-Rupees	Lots 701 - 709
	15-Rupees	Lots 710 - 711
	Mohur	Lots 712 - 723
	2-Mohurs	Lot 724

FREE LIVE INTERNET BIDDING

Baldwin's are pleased to be offering our clients a FREE live video bidding service.
There are no additional fees for using this service.

www.the-saleroom.com/baldwins

Buyer's Premium: 20% plus VAT

Catalogue Editor Edward Baldwin
Design and Layout Seth Freeman
Cataloguer Randy Weir

Photography Sam Weedall

Printed by Park Communications Ltd, London, UK

The DAVID FORE Collection

Coins of British India Part One - Proofs, Restrikes and Off-Metal Strikes

Introduction

I first met Dr. David Fore more than twenty five years ago when David responded to one of my World Coin News advertisements, expressing an interest in British colonial coins. He appreciated the coins and grades he received from me and, after a few phone calls back and forth, it became apparent that we were on the same page. We soon formed a plan to build a monumental collection of the finest British Indian coinage. My knowledge and David's keen interest has taken us on an odyssey which has resulted in this, the David Fore Collection. It is one of the finest collections of Proofs, Restrikes and Patterns from British India ever put together and represents some forty years of search, research and money spent to find the nicest coins possible, with only the Pridmore collection (from what seems aeons ago) to compare. This outstanding collection, skilfully formed, shows what can be achieved by a collector of conviction, a reasonable amount of money and a trusted agent travelling to find the coins.

David told me that his interest in collecting coins began as a child, when he watched his father, who owned a small store in a rural town of two thousand people, search his change looking for the elusive US 1909 SVDB Penny. Although he never found that coin, he had almost complete sets of most of the denominations of US coins. At age nine, David's first job was delivering newspapers. Instead of buying comic books, he would take his weekly earnings of a few dollars to the bank and get rolls of pennies to search through, also looking for that 1909 Penny.

His very first foreign coin purchase was an Indian Proof Restrike ¼-Anna from Lauren Benson. This coin was the beginning of a love affair with Indian coins that was to last for forty years. He bought restrikes every time he found them for the next eight years, while he completed his medical school and post graduate training.

I was privileged to introduce David to the fascinating world of colonial coins with coins from the famous Dick Ford collection and the Heaton Mint coins sold by Format of Birmingham in the United Kingdom. Our relationship was perfectly symbiotic. I clocked up the air miles travelling to build up a network of international dealers that would save the best coins; I scoured the auctions for anything that needed to be added to the collection, I found some wonderful coins that way. David's only job was to have the money to pay for these purchases. A perfect 50/50 relationship if ever I heard of one! David quickly came to calling the collection "our coins" as it really did take the two of us to make it happen. This added a bit of a new angle for me, in that, if they were going to be "our" coins, then I had better make sure that these were coins that "I" was proud to own.

In the beginning there was no lack of coins to buy and I was able to keep Dave fairly "broke" (although I allowed him enough money to put food on the table and four children through University). His wonderful wife never questioned what we were doing, although she thought that other Doctors made a little more money than Dave and wondered what the heck her husband was doing with all these boxes of coins!

David recalls that the Pridmore collection had just been auctioned when we first met and there were coins in this collection we set out to track down. David bought the Pridmore books, with the result that every coin we purchased had meaning for him. For him the minor differences and pattern coins are so fascinating that every coin we bought was like prospecting for gold.

Many of the coins in this collection came from the Pridmore collection, but also from other famous collections of Indian coins such as the Sir John Wheeler Collection, the Ken Wiggins Collection and the Diana Collection, all auctioned by Baldwin's in London. The competition for these coins at auctions was intense and we paid more than we would reasonably expect to pay for many of the coins we bought but, in the end, we were happy to be the successful bidder many times in these and other auctions. Numerous coins were purchased at other auctions and from other collectors and dealers. To all those, we extend a thank you for the wonderful coins in this collection.

David and I had an exciting time putting this collection together, but now it is time for David and his wife to benefit from the fruits of our labours. They are still both fit and young at heart and I expect them to enjoy the proceeds from these coins that we have so lovingly collected.

Throughout the process of putting the collection together our main focus was to finding the best quality coins. I had seen those who didn't consider this greatly disappointed when they eventually sold their collection. In my head quality equates to a good investment. For this reason David and I decided early that it was better to pay "tomorrow's" prices for top quality coins. We both got really inspired by the coins of India. They were usually cheap and usually available in nice grade with a plethora of dates, and unknowns, that made the whole enterprise most interesting.

I spent a great deal of time at the British Museum and a few of the older collectors allowed me to view their collections the better to understand this series, especially with its cornucopie of Proofs and Restrikes. As a result, I learned early to acknowledge and understand the differences, and I extend my thanks Thomas Curtis at Baldwin's, Hil Kaslove and Jim Haxby (both ex-Deputy Curators of the Bank of Canada) for their part in this education.

The last few years have seen many changes to the coin collecting hobby and, in particular, to the Indian coin market. Auctions have become more international, instead of a room of dealers only representing themselves or their collectors, better communications have allowed more collectors direct access to the auctions and the internet has revolutionised bidding. Today collectors from around the world are able to bid on the coins they want with a click of a button.

However, one of the things that has been lost is the collectors desire to take time to learn more about the process of grading these coins, for which they can be paying a great deal of money. Too often they rely on the services of a third party grading company. In putting together this collection, David and I believe it is important and enjoyable to know what constitutes the parameters used to grade a coin. The lustre, the strike, the marks, the overall aesthetics play a vital part in determining the value of a coin, and we believe this should always be part of the system in the selling of coins. What good auction houses can offer collectors today is our knowledge of the coins being sold. We have an opportunity here with the Fore Collection to add to that knowledge from a few hundred years of experience through numerous numismatists and generations here in Baldwin's. We want to make our catalogues a source of information and a reference work that can be used, and will be useful, for years to come.

A Note on References Used

Since the Pridmore collection, nothing of note from the Presidency series had appeared at auction, but a great deal of information has been gleaned from the study of original information found in the records of the East India Company by Dr. Paul Stevens. His trilogy of books starts with the Bengal Presidency series (published by Baldwin's and available from them and Mr F Todywalla in India) will give us a much greater insight into this series. The Fore collection will act as a market barometer, allowing us to see what these coins are really worth in today's market place, as well as giving us a catalogue that we can use as the study continues on this series.

The "SW" references in each lot description refers to the new standard work for this series : *Coins of British India 1835-1947*, and the sale of the David Fore Collection gives collectors the chance to buy coins used in this book written by Dr Paul Stevens and myself. What a wonderful pedigree to have!

A Note on Grading

As any collector of the Indian Proof series knows, the Bombay mint lacquered most of their coins after striking. Early collectors complained that the heavy sulphur in the envelopes toned their coins and asked if the mint could do something about it. Lacquering seemed to be a viable option and so this is what they did. However, this lacquer was not always applied in the most careful way, and it is usual to find that parts of the coin missing this lacquer. Another feature of this process is what appears to be hairlines on the coins, that are actually just a heavy hand with the lacquer brush. Inexperienced third-party grading services often see these lacquer lines as "impairments" and grade the coins accordingly. The long time collector of Indian coins will naturally accept this lacquer as an integral part of the production process, knowing that it does not reduce the desirability of the coin. Those who have seen the heavy toning on non-lacquered Indian coins usually agree that the lacquer is a better alternative.

The coins in this collection have been described with the lacquer, as a formal part of the striking. Notes have been added to describe a coin on which there has been an attempt to remove the lacquer or where hairlines or marks can be seen on the coin that occurred after it left the mint. In general terms, the coins in this collection have been graded to American international standards.

Randy Weir
randy@baldwin.co.uk



- 1 Copper Original Proof 1/12-Anna, 1862, *obv* VICTORIA QUEEN (SW 4.183; Pr 778). *Choice bronzed proof, uncirculated.* £200-300
- 2 Copper Early Proof Restrike 1/12-Anna, 1862, *obv* VICTORIA QUEEN (SW 04.187; Pr 716a). *Choice Proof, two-thirds toned, uncirculated.* £200-300
- 3 Copper Original Proof 1/12-Anna, 1862, *obv* VICTORIA QUEEN (SW 4.185; Pr 779). *Choice Proof, subdued mint red, uncirculated.* £300-500

ex Pridmore collection, with ticket



- 4 Gold Proof 1/12-Anna, 1862, off-metal strike in gold, 19th Century, *obv* VICTORIA QUEEN (SW 4.186). *Numerous light marks, otherwise uncirculated.* £1500-2000



- 5 Copper Original Proof 1/12-Anna, 1875C, *obv* VICTORIA QUEEN (SW 5.6). *Choice bronzed Proof, a few light marks, uncirculated.* £250-350
- 6 Copper Proof Restrike 1/12-Anna, 1877B, *obv* VICTORIA EMPRESS (SW 6.611). *Lacquered, brilliant uncirculated.* £150-200



- 7 Copper Proof Restrike 1/12-Anna, 1877C, *obv* VICTORIA EMPRESS (SW 6.613). *Lacquered, brilliant uncirculated.* £150-200
- 8 Copper Original Proof 1/12-Anna, 1878C, *obv* VICTORIA EMPRESS (SW 6.615). *Toned, uncirculated.* £250-350

ex JJ Pittman collection



- 9 Copper Original Proof 1/12-Anna, 1890C, *obv* VICTORIA EMPRESS (SW 6.634). *Toned, uncirculated, a few light marks.* £250-350
- 10 Copper Proof Restrike 1/12-Anna, 1891C, *obv* VICTORIA EMPRESS (SW 6.636). *Lacquer removed, one obverse scratch, otherwise uncirculated.* £120-180
- 11 Copper Original Proof 1/12-Anna, 1891C, *obv* VICTORIA EMPRESS (SW 6.636). *Toned, choice uncirculated.* £250-350

ex JJ Pittman collection



- 12 Silver Original Proof 1/12-Anna, 1891C, *off-metal strike in silver, obv* VICTORIA EMPRESS (SW 6.638). *Toned, choice uncirculated.* £1000-1500

ex JJ Pittman collection



- 13 Copper Proof Restrike 1/12-Anna, 1892C, *obv* VICTORIA EMPRESS (SW 6.641). *Lacquered, brilliant uncirculated.* £150-200
- 14 Copper Early Proof Restrike 1/12-Anna, 1892C, *obv* VICTORIA EMPRESS (SW 6.641). *Mostly toned, choice uncirculated.* £200-300



- 15 Silver Early Proof Restrike 1/12-Anna, 1892C, *off-metal strike in silver, obv* VICTORIA EMPRESS (SW unlisted). *In PCGS holder, graded PR61, poorly lacquered and a little light spotting on the reverse.* £500-800

The unlisted silver pieces were all bought by David Fore some time ago as one lot, strongly suggesting that these were all struck at the same time. Unfortunately, the box housing them was rediscovered after *Coins of British India 1835-1947* was finished. It is most unlikely this coin was struck earlier than the other pieces, but you will note in the silver ½-Pice series, a number of different obverses were used, indicating different striking times. Most interesting!

- 16 Copper Original Proof 1/12-Anna, 1892C, *obv* VICTORIA EMPRESS (SW 6.641). *Mostly toned, choice uncirculated.* £250-350



17



18



19

17 Copper Early Proof Restrike 1/12-Anna, 1893C, *obv* VICTORIA EMPRESS (SW 6.645). *A few reverse spots, the obverse has been wiped, otherwise uncirculated.* £100-150

18 Copper Original Proof 1/12-Anna, 1893C, *obv* VICTORIA EMPRESS (SW 6.645). *Toned, choice uncirculated.* £300-400

ex Pridmore collection, with ticket

19 Silver Proof Restrike 1/12-Anna, 1893C, *off-metal strike in silver, obv* VICTORIA EMPRESS (SW unlisted). *In PCGS holder, graded PR62, poorly lacquered.* £500-800

With thin but long reverse die break making one suspect this was done late in the restrike series



20 Gold Early Proof Restrike 1/12-Anna, 1893C, *off-metal strike in gold, obv* VICTORIA EMPRESS (SW 6.647). *Light hairlines, otherwise very pleasing and uncirculated.* £1000-1500



21



22

21 Silver Proof Restrike 1/12-Anna, 1894C, *off-metal strike in silver, obv* VICTORIA EMPRESS (SW unlisted). *In PCGS holder, graded PR62, poorly lacquered with areas of discolouration where the lacquer was not applied properly.* £500-800

22 Copper Original Proof 1/12-Anna, 1894C, *obv* VICTORIA EMPRESS (SW 6.649). *A few spots of discolouration, otherwise uncirculated.* £120-180



23



24

23 Copper Early Proof Restrike 1/12-Anna, 1896C, *obv* VICTORIA EMPRESS (SW 6.656). *Red and brown, nice uncirculated.* £200-300

24 Silver Proof Restrike 1/12-Anna, 1896C, *off-metal strike in silver, obv* VICTORIA EMPRESS (SW unlisted). *In PCGS holder, graded PR63, poorly lacquered with a few small areas of discolouration where the lacquer was not applied properly.* £500-800



25



26



27

- 25 Copper Original Proof 1/12-Anna, 1896C, *obv* VICTORIA EMPRESS (SW 6.656). *Toned, choice uncirculated.* £250-350

ex Brand collection
ex Pridmore collection, with ticket

- 26 Copper Proof Restrike 1/12-Anna, 1896B, *obv* VICTORIA EMPRESS (SW 6.658a). *Lacquered, brilliant uncirculated.* £120-180

- 27 Copper Proof Restrike 1/12-Anna, 1897C, *obv* VICTORIA EMPRESS (SW 6.660). *Lacquered, brilliant uncirculated.* £120-180



- 28 Silver Proof 1/12-Anna, 1897C, off-metal strike in silver, *obv* VICTORIA EMPRESS (SW unlisted). *In PCGS holder, graded PR63.* £500-800



- 29 Gold Proof Restrike 1/12-Anna, 1897C, off-metal strike in gold, *obv* VICTORIA EMPRESS (SW 6.662). *A few very light marks, otherwise choice uncirculated.* £1000-1500



30



31



32

- 30 Copper Proof Restrike 1/12-Anna, 1898C, *obv* VICTORIA EMPRESS (SW 6.664). *Lacquered, brilliant uncirculated.* £120-180

- 31 Copper Original Proof 1/12-Anna, 1898C, *obv* VICTORIA EMPRESS (SW 6.664). *Toned, a few light marks, otherwise uncirculated.* £200-300

- 32 Silver Early Proof Restrike 1/12-Anna, 1898C, off-metal strike in silver, *obv* VICTORIA EMPRESS (SW 6.665). *Toned, choice uncirculated.* £500-800

ex JJ Pittman collection



- 33 Gold Early Proof Restrike 1/12-Anna, 1898C, off-metal strike in gold, *obv* VICTORIA EMPRESS (SW 6.666). *Choice, brilliant uncirculated.* £1000-1500



34



35



36

- 34 Copper Original Proof 1/12-Anna, 1899C, *obv* VICTORIA EMPRESS (SW 6.668). *Toned, uncirculated and superb.* £250-400

- 35 Silver Proof Restrike 1/12-Anna, 1899C, off-metal strike in silver, *obv* VICTORIA EMPRESS (SW 6.669). *Uneven tone due to inadequate lacquer removal, otherwise uncirculated.* £500-800

If conserved properly this would probably become a choice coin

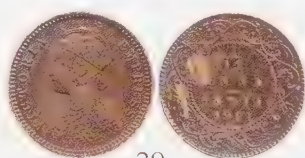
- 36 Copper Proof Restrike 1/12-Anna, 1899B, Proof Restrike-only mintmark issue, *obv* VICTORIA EMPRESS (SW 6.671). *Lacquered, brilliant uncirculated, though a few marks in the lacquer.* £300-400



37



38

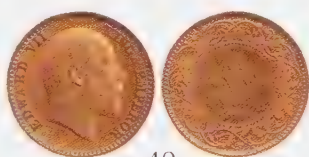


39

- 37 Copper Proof Restrike 1/12-Anna, 1900C, Proof Restrike-only date and mintmark, *obv* VICTORIA EMPRESS (SW 6.671a). *Lacquered, brilliant uncirculated.* £300-500

- 38 Copper Proof Restrike 1/12-Anna, 1901C, *obv* VICTORIA EMPRESS (SW 6.673). *Lacquered, brilliant uncirculated.* £150-200

- 39 Silver Early Proof Restrike 1/12-Anna, 1901C, off-metal strike in silver, *obv* VICTORIA EMPRESS (SW 6.674). *Toned, choice uncirculated.* £500-800



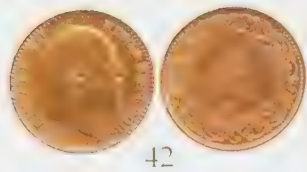
40



41

- 40 Copper Original Proof 1/12-Anna, 1903, *obv* EDWARD VII KING & EMPEROR (SW 7.209). *Uncirculated, superb and mostly brilliant.* £250-350

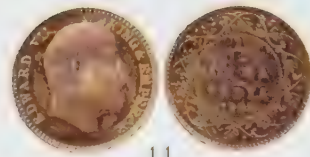
- 41 Copper Proof Restrike 1/12-Anna, 1904, *obv* EDWARD VII KING & EMPEROR (SW 7.211). *Lacquered, brilliant uncirculated and with a superb frost on King's bust.* £200-300



42



43



44

- 42 Copper Original Proof 1/12-Anna, 1904, *obv* EDWARD VII KING & EMPEROR (SW 7.211). *Red and brown, choice uncirculated.* £300-400
- 43 Copper Proof Restrike 1/12-Anna, 1905, *obv* EDWARD VII KING & EMPEROR (SW 7.216). *Lacquered, brilliant uncirculated.* £200-300
- 44 Silver Original Proof 1/12-Anna, 1905, off-metal strike in silver, *obv* EDWARD VII KING & EMPEROR (SW 7.218). *Toned, choice uncirculated.* £500-800

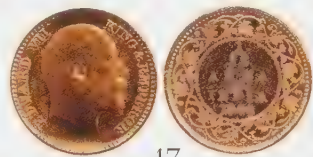


45

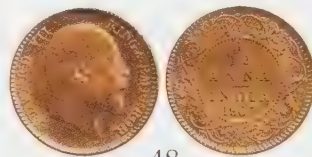


46

- 45 Copper Original Proof 1/12-Anna, 1905, *obv* EDWARD VII KING & EMPEROR (SW 7.216). *Lightly toned, choice uncirculated.* £300-400
- 46 Copper Proof Restrike 1/12-Anna, 1906, *obv* EDWARD VII KING & EMPEROR (SW 7.220). *Lacquered, choice uncirculated.* £200-300



47



48

- 47 Bronze Original Proof 1/12-Anna, 1906, *obv* EDWARD VII KING & EMPEROR (SW 7.222). *Red and brown, choice uncirculated.* £300-400
- 48 Bronze Original Proof 1/12-Anna, 1907, *obv* EDWARD VII KING & EMPEROR (SW 7.224). *Red and brown, uncirculated.* £300-400



- 49 Bronze Proof Restrike 1/12-Anna, 1908, *obv* EDWARD VII KING & EMPEROR (SW 7.226). *Lacquered, brilliant uncirculated.* £200-300
ex J J Pittman collection

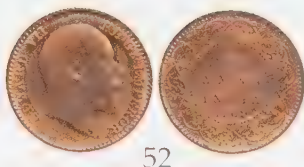


- 50 Bronze Original Proof 1/12-Anna, 1908, *obv* EDWARD VII KING & EMPEROR (SW 7.226). *Choice uncirculated, brilliant.* £300-400

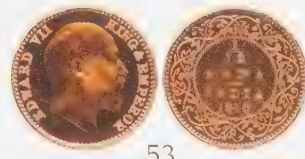
This has the deepest mirror surfaces of all the Edward 1/12-Annas in this auction.



51



52



53

- 51 Bronze Proof Restrike 1/12-Anna, 1909, *obv* EDWARD VII KING & EMPEROR (SW 7.228). *Lacquered, brilliant uncirculated.* £100-150
- 52 Bronze Original Proof 1/12-Anna, 1909, *obv* EDWARD VII KING & EMPEROR (SW 7.228). *Red and brown, a little dull on the portrait, otherwise uncirculated.* £300-400
- 53 Bronze Proof Restrike 1/12-Anna, 1910, *obv* EDWARD VII KING & EMPEROR (SW 7.231). *Lacquered, brilliant uncirculated.* £200-300



54



55



56

- 54 Bronze Proof Restrike 1/12-Anna, 1912, *obv* GEORGE V KING EMPEROR (SW 8.531). *Lacquered, brilliant uncirculated.* £100-150
- 55 Bronze Original Proof 1/12-Anna, 1912, *obv* GEORGE V KING EMPEROR (SW 8.531). *Darkly toned, about uncirculated.* £200-300
- 56 Bronze Proof Restrike 1/12-Anna, 1913, *obv* GEORGE V KING EMPEROR (SW 8.533). *Lacquered, brilliant uncirculated.* £100-150



57



58



59

- 57 Bronze Proof Restrike 1/12-Anna, 1914, *obv* GEORGE V KING EMPEROR (SW 8.535). *Lacquered, brilliant uncirculated.* £100-150
- 58 Bronze Proof Restrike 1/12-Anna, 1915, *obv* GEORGE V KING EMPEROR (SW 8.537). *Lacquered, brilliant uncirculated.* £100-150
- 59 Bronze Proof Restrike 1/12-Anna, 1916, *obv* GEORGE V KING EMPEROR (SW 8.539). *Lacquered, brilliant uncirculated.* £100-150



60



61



62

- 60 Bronze Proof Restrike 1/12-Anna, 1917, *obv* GEORGE V KING EMPEROR (SW 8.541). *Lacquered, spot on the rim, otherwise brilliant about uncirculated.* £100-150
- 61 Bronze Proof Restrike 1/12-Anna, 1918, *obv* GEORGE V KING EMPEROR (SW 8.543). *Lacquered, brilliant uncirculated.* £100-150
- 62 Bronze Proof Restrike 1/12-Anna, 1919, *obv* GEORGE V KING EMPEROR (SW 8.545). *Lacquered, brilliant uncirculated.* £100-150



63



64



65

63 Bronze Proof Restrike 1/12-Anna, 1920, *obv* GEORGE V KING EMPEROR (SW 8.547). *Lacquered, brilliant uncirculated.* £100-150

64 Bronze Proof Restrike 1/12-Anna, 1921, *obv* GEORGE V KING EMPEROR (SW 8.549). *Lacquered, brilliant uncirculated.* £100-150

65 Bronze Proof Restrike 1/2-Anna, 1923B, *obv* GEORGE V KING EMPEROR (SW 8.553). *Lacquered, brilliant uncirculated.* £100-150



66



67



68

66 Bronze Proof Restrike 1/12-Anna, 1924C, *obv* GEORGE V KING EMPEROR (SW 8.555). *Lacquered, brilliant uncirculated.* £100-150

67 Bronze Proof Restrike 1/12-Anna, 1924B, *obv* GEORGE V KING EMPEROR (SW 8.557). *Lacquered, brilliant about uncirculated, a few marks.* £100-150

ex Pridmore collection, with ticket

68 Bronze Proof Restrike 1/12-Anna, 1925C, *obv* GEORGE V KING EMPEROR (SW 8.559). *Lacquered, brilliant uncirculated.* £100-150



69



70



71

69 Bronze Proof Restrike 1/12-Anna, 1925B, *obv* GEORGE V KING EMPEROR (SW 8.561). *Lacquer removed from obverse leaving many small spots, otherwise brilliant uncirculated.* £100-150

70 Bronze Proof Restrike 1/12-Anna, 1926C, *obv* GEORGE V KING EMPEROR (SW 8.563). *Lacquered, brilliant uncirculated.* £100-150

71 Bronze Proof Restrike 1/12-Anna, 1926B, *obv* GEORGE V KING EMPEROR (SW 8.565). *Lacquered, a few marks, otherwise brilliant uncirculated.* £100-150



72



73

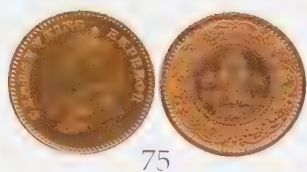


74

72 Bronze Proof Restrike 1/12-Anna, 1927C, *obv* GEORGE V KING EMPEROR (SW 8.567). *Lacquered, brilliant uncirculated.* £100-150

73 Bronze Proof Restrike 1/12-Anna, 1927B, *obv* GEORGE V KING EMPEROR (SW 8.569). *Lacquered, toned under the bust where the lacquer was not applied properly, otherwise brilliant uncirculated.* £100-150

74 Bronze Proof Restrike 1/12-Anna, 1928B, *obv* GEORGE V KING EMPEROR (SW 8.573). *Lacquered, brilliant uncirculated.* £100-150



75



76



77

75 Bronze Original Proof 1/12-Anna, 1929C, *obv* GEORGE V KING EMPEROR (SW 8.576). *Lightly toned, choice uncirculated.* £200-350

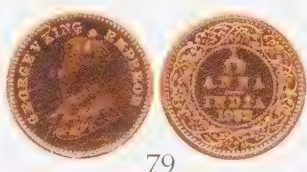
ex Spencer collection
ex Pridmore collection, with ticket

76 Bronze Proof Restrike 1/12-Anna, 1929C, *obv* GEORGE V KING EMPEROR (SW 8.576). *Lacquered, a few marks, otherwise brilliant uncirculated.* £100-150

77 Bronze Proof Restrike 1/12-Anna, 1930C, *obv* GEORGE V KING EMPEROR (SW 8.578). *Lacquered, brilliant uncirculated.* £100-150



78



79



80

78 Bronze Proof Restrike 1/12-Anna, 1931C, *obv* GEORGE V KING EMPEROR (SW 8.580). *Lacquered, brilliant uncirculated.* £100-150

79 Bronze Proof Restrike 1/12-Anna, 1932C, *obv* GEORGE V KING EMPEROR (SW 8.582). *Lacquered, a few light obverse hairlines, otherwise brilliant uncirculated.* £100-150

80 Bronze Proof Restrike 1/12-Anna, 1933C, *obv* GEORGE V KING EMPEROR (SW 8.584). *Lacquered, brilliant uncirculated.* £100-150



81



82



83

81 Bronze Proof Restrike 1/12-Anna, 1934C, *obv* GEORGE V KING EMPEROR (SW 8.586). *Lacquered, brilliant uncirculated.* £100-150

82 Bronze Proof Restrike 1/12-Anna, 1935C, *obv* GEORGE V KING EMPEROR (SW 8.588). *Lacquered, a few light marks, otherwise brilliant uncirculated.* £100-150

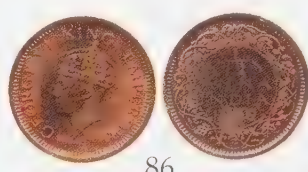
83 Bronze Proof Restrike 1/12-Anna, 1936C, *obv* GEORGE V KING EMPEROR (SW 8.590). *Lacquered, brilliant uncirculated.* £100-150



84



85



86

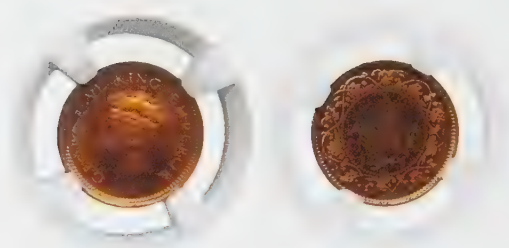
84 Bronze Proof Restrike 1/12-Anna, 1938C, *obverse 1, obv* GEORGE VI KING EMPEROR (SW 9.265). *Lacquered, brilliant uncirculated.* £150-250

85 Bronze Original Proof 1/12-Anna, 1939B, *obverse 2, obv* GEORGE VI KING EMPEROR (SW 9.268). *Mostly brown, 30% red, not lacquered, uncirculated.* £200-300

ex Spencer collection
ex Pridmore collection, with ticket

86 Bronze Original Proof 1/12-Anna, 1939C, *obverse 2, obv* GEORGE VI KING EMPEROR (SW 9.270). *Mostly brown, uncirculated.* £200-300

ex J J Pittman collection



- 87 Bronze Original Proof Pattern 1/12-Anna, 1941B, obverse 1, *obv* GEORGE VI KING EMPEROR (SW 9.277).
In NGC holder, graded PF63RB. £500-800

ex Spencer collection
 ex Pridmore collection



- 88 Bronze Early Proof Restrike 1/12-Anna, 1941B, obverse 1, *obv* GEORGE VI KING EMPEROR (SW 9.276a).
Lightly lacquered, still with some tone, uncirculated. £200-300
- 89 Copper Proof Restrike 1/12-Anna, 1942B, obverse 2, *obv* GEORGE VI KING EMPEROR (SW 9.279).
Lacquered, some light hairlines, otherwise brilliant uncirculated. £100-150
- 90 Copper Proof Restrike ½-Pice, 1853C, *rev* EAST INDIA COMPANY (SW 3.85). *Lacquered, brilliant uncirculated.* £200-300



- 91 Gold Proof Restrike ½-Pice, 1853C, off-metal strike in gold, *rev* EAST INDIA COMPANY (SW 3.86).
Brilliant uncirculated and superb. £1000-1500



- 92 Copper Proof Restrike ½-Pice, 1862, *obv* VICTORIA QUEEN (SW 4.175). *Lacquered, a few hairlines, otherwise brilliant uncirculated.* £150-200



93



94



95

- 93 Copper Proof Restrike ½-Pice, 1862, *obv* VICTORIA QUEEN (SW 4.178). *Lacquer removed poorly, now re-toning, about uncirculated.* £100-150
- 94 Copper Original Proof ½-Pice, 1862, *obv* VICTORIA QUEEN (SW 4.178). *Mostly red, a touch of obverse spotting, otherwise about uncirculated.* £400-600
- 95 Copper Original Proof ½-Pice, 1862, *obv* VICTORIA QUEEN (SW 4.180). *Subdued red, uncirculated with a lovely frosted bust.* £500-800

There is a touch of die rust on the Queen's face, usually indicating a die that has not been used for some time, but this piece was struck sometime in 1862 or very close to it



- 96 Gold Early Proof Restrike ½-Pice, 1862, *off-metal strike in gold, obv* VICTORIA QUEEN (SW 4.177). *Numerous small handling marks, as is often seen on these gold restrikes, otherwise uncirculated.* £1000-1500



97



98



99

- 97 Copper Proof Restrike ½-Pice, 1875C, a proof only date, *obv* VICTORIA QUEEN (SW 5.56). *Lacquer improperly removed, uneven toning and some marks, otherwise uncirculated.* £150-300
- 98 Copper Original Proof ½-Pice, 1875C, *obv* VICTORIA QUEEN (SW 5.56). *Chocolate brown colour, superb uncirculated.* £300-500
- 99 Copper Proof Restrike ½-Pice, 1877C, proof only date, *obv* VICTORIA EMPRESS (SW 6.559). *Brilliant about uncirculated, light hairlines.* £150-300



- 100 Copper Original Proof 1/2-Pice, 1878C, *obv* VICTORIA EMPRESS (SW 6.560). *Toned, choice uncirculated.* £300-500
- 101 Copper Early Proof Restrike 1/2-Pice, 1890C, *obv* VICTORIA EMPRESS (SW 6.567). *Toned, lower left of Queen's jabot polished off, otherwise uncirculated.* £200-300



- 102 Copper Original Proof 1/2-Pice, 1890C, *obv* VICTORIA EMPRESS, full jabot on the lower part of the Queens's dress (SW 6.567). *Has been cleaned long ago, now re-toning, otherwise uncirculated.* £200-300
ex JJ Pittman collection
- 103 Copper Original Proof 1/2-Pice, 1891C, *obv* VICTORIA EMPRESS (SW 6.569). *Two small spots of verdigris on the reverse, toned with some mint red, otherwise uncirculated.* £200-300



- 104 Silver Original Proof 1/2-Pice, 1891C, off-metal strike in silver, *obv* VICTORIA EMPRESS (SW 6-569a). *Heavily toned, choice uncirculated.* £500-800
ex JJ Pittman collection



- 105 Copper Early Proof Restrike 1/2-Pice, 1892C, *obv* VICTORIA EMPRESS (SW 6.573). *Has been lightly polished to remove some verdigris on the reverse, otherwise brilliant uncirculated.* £200-300
- 106 Copper Original Proof 1/2-Pice, 1892C, *obv* VICTORIA EMPRESS (SW 6.573). *Toned with mint red in the devices, choice uncirculated.* £300-400



- 107 Silver 1/2-Pice, 1892C, off-metal strike in silver, *obv* VICTORIA EMPRESS (SW 6.574). *In PCGS holder, graded PR63, discolouration by the Queen's mouth and a few light hairlines in the lacquer.* £500-800



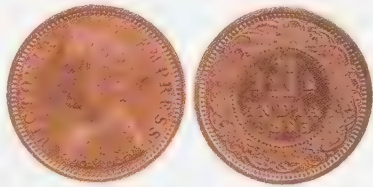
- 108 Gold Early Proof Restrike ½-Pice, 1892C, off-metal strike in gold, *obv* VICTORIA EMPRESS (SW 6.575).
A few light marks in the field, otherwise uncirculated. £2000-3000



- 109 Copper Proof Restrike ½-Pice, 1893C, probably an early restrike, *obv* VICTORIA EMPRESS (SW 6.577).
Has been cleaned, now re-toning, a number of light marks overall, otherwise uncirculated. £150-250

ex Remick collection, therefore cleaned, now re-toning

The lower corner of the Queen's jabot has been polished away, and the lower part of her chin strengthened through die re-working.



- 110 Copper Original Proof ½-Pice, 1893C, *obv* VICTORIA EMPRESS (SW 6.577). *Toned, choice uncirculated.* £300-400



- 111 Silver Early Proof Restrike ½-Pice, 1893C, off-metal strike in silver, *obv* VICTORIA EMPRESS (SW 6.578).
In PCGS holder, graded PR65, superb. £500-800

same characteristics as the copper piece in the previous lot



- 112 Gold Early Proof Restrike 1/2-Pice, 1893C, off-metal strike in gold, *obv* VICTORIA EMPRESS (SW 6.579). One small reverse scratch, otherwise superb uncirculated. £1000-1500



113



114

- 113 Copper Original Proof 1/2-Pice, 1894C, *obv* VICTORIA EMPRESS (SW 6.581). Lightly toned, one very small spot of verdigris, otherwise uncirculated. £300-400

- 114 Silver Proof 1/2-Pice, 1894C, off-metal strike in silver, *obv* VICTORIA EMPRESS (SW 6.582). In PCGS holder, graded PR62, has been cleaned at one time and some discolouration around the "1/2" on the reverse. £400-600



115



116

- 115 Copper Original Proof 1/2-Pice, 1896C, *obv* VICTORIA EMPRESS (SW 6.588). Toned a light chocolate colour, some mild reverse toning streaks, otherwise uncirculated. £250-350

- 116 Silver Proof 1/2-Pice, 1896C, off-metal strike in silver, *obv* VICTORIA EMPRESS (SW 6.589). In PCGS holder, graded PR62, an attempt has been made to remove the lacquer, leaving a little cloudiness. £400-600



- 117 Gold Proof Restrike 1/2-Pice, 1896C, off-metal strike in gold, *obv* VICTORIA EMPRESS (SW 6.590). A number of handling marks, otherwise uncirculated. £800-1200



- 118 Copper Early Proof Restrike 1/2-Pice, 1897C, *obv* VICTORIA EMPRESS, lower part the jabot missing and the Queen's chin re-punched (SW 6.592). *Toned and pleasant, a few light spots, otherwise uncirculated.* £200-300



- 119 Silver Proof 1/2-Pice, 1897C, off-metal strike in silver, *obv* VICTORIA EMPRESS, the chin has been re-punched and the corner on the lower part of the jabot is missing (SW 6.593). *In PCGS holder, graded PR62, a few hairlines from the attempted lacquer removal.* £500-800



- 120 Gold Early Proof Restrike 1/2-Pice, 1897C, off-metal strike in gold, *obv* VICTORIA EMPRESS, lower part of the chin re-punched and lower corner of the jabot missing (SW 6.594). *Superb, uncirculated, the finest gold piece in the collection so far.* £1500-2000



121

122

- 121 Copper Proof Restrike 1/2-Pice, 1898C, probably an early restrike, *obv* VICTORIA EMPRESS (SW 6.596). *Uncirculated Proof.* £200-300

ex Remick collection, therefore cleaned

With the same characteristics as the other early Proof Restrikes in this collection

- 122 Silver Early Proof Restrike 1/2-Pice, 1898C, off-metal strike in silver, *obv* VICTORIA EMPRESS (SW 6.597). *Heavily toned, choice uncirculated.* £500-800

ex J J Pittman collection



- 123 Copper Proof Restrike ½-Pice, 1899C, *obv* VICTORIA EMPRESS (SW 6.600). *A few cloudy spots, otherwise uncirculated.* £150-200



- 124 Silver Early Proof Restrike ½-Pice, 1899C, off-metal strike in silver, *obv* VICTORIA EMPRESS (SW 6.601). *Lightly toned, superb uncirculated.* £600-800



- 125 Copper Proof Restrike ½-Pice, 1900C, *obv* VICTORIA EMPRESS (SW 6.604). *Lacquered, brilliant uncirculated.* £150-250
- 126 Copper Original Proof ½-Pice, 1900C, *obv* VICTORIA EMPRESS (SW 6.604). *The obverse is a mahogany colour while the reverse has much red, choice uncirculated.* £250-350
- 127 Silver Proof Restrike ½-Pice, 1900C, off-metal strike in silver, *obv* VICTORIA EMPRESS (SW 6.605). *In PCGS holder, graded PR62, partial lacquer removal but a nice coin underneath.* £500-800



- 128 Silver Early Proof Restrike ½-Pice, 1901C, off-metal strike in silver, *obv* VICTORIA EMPRESS (SW 6.608). *Poor attempt to remove the lacquer which has left some cloudiness, otherwise uncirculated.* £400-600

With the same characteristics as the other early Proof Restrikes in this collection

- 129 Copper Original Proof ½-Pice, 1903C, *obv* EDWARD VII KING & EMPEROR (SW 7.183). *Choice uncirculated.* £250-400

Not quite up to the high standards of the Victoria issues. The obverse dies for the new monarch had so much relief in the details of the head that the reverse striking is often weak due to a lack of metal and, as a result, we see a lot of different effects on this date. The tell of the weak strike on this piece is the reverse letters.



- 130 Silver Original Proof 1/2-Pice, 1903C, off-metal strike in silver, *obv* EDWARD VII KING & EMPEROR (SW 184). *Toned, superb uncirculated.* £800-1200

ex Brand collection
ex Pridmore collection



- 131 Copper Proof Restrike 1/2-Pice, 1904C, *obv* EDWARD VII KING & EMPEROR (SW 7.187). *Lacquered, brilliant uncirculated.* £250-350

ex J J Pittman collection



- 132 Silver Proof Restrike 1/2-Pice, 1904C, off-metal strike in silver, *obv* EDWARD VII KING & EMPEROR (SW 7.190). *In PCGS holder, graded PR62, lacquer partially removed, toning spot on the reverse.* £500-800



- 133 Silver Original Proof 1/2-Pice, 1905, off-metal strike in silver, *obv* EDWARD VII KING & EMPEROR (SW 7.194). *In NGC holder, graded PF65.* £800-1200



134



135



136

134 Copper Proof Restrike 1/2-Pice, 1905C, *obv* EDWARD VII KING & EMPEROR (SW 7.193). *Lacquered, brilliant uncirculated.* £250-350

135 Copper Early Proof Restrike 1/2-Pice, 1905C, *obv* EDWARD VII KING & EMPEROR (SW 7.193). *Subdued brown, choice uncirculated.* £300-400

136 Copper Proof Restrike 1/2-Pice, 1906C, *obv* EDWARD VII KING & EMPEROR (SW 7.196). *Lacquered, brilliant uncirculated.* £200-300



137



138



139

137 Bronze Original Proof 1/2-Pice, 1906C, *obv* EDWARD VII KING & EMPEROR (SW 7.198). *Subdued red, choice uncirculated.* £400-600

138 Copper Proof Restrike 1/2-Pice, 1908C, *obv* EDWARD VII KING & EMPEROR (SW 7.202). *Lacquered, brilliant uncirculated.* £250-350

139 Copper Original Proof 1/2-Pice, 1908C, *obv* EDWARD VII KING & EMPEROR (SW 7.202). *Red and brown, superb proof, uncirculated.* £400-600



140



141



142

140 Copper Proof Restrike 1/2-Pice, 1909C, *obv* EDWARD VII KING & EMPEROR (SW 7.204). *Lacquered, brilliant uncirculated.* £200-300

141 Copper Proof Restrike 1/2-Pice, 1910C, *obv* EDWARD VII KING & EMPEROR (SW 7.207). *Lacquered, brilliant uncirculated.* £200-300

142 Bronze Original Proof 1/2-Pice, 1912C, *obv* GEORGE V KING EMPEROR (SW 8.391). *Red and brown, choice uncirculated.* £200-300



143



144

143 Bronze Proof Restrike 1/2-Pice, 1913C, *obv* GEORGE V KING EMPEROR (SW 8.393). *In NGC holder, graded PL63RD, fully brilliant, hairlines in lacquer only.* £150-250

144 Bronze Proof Restrike 1/2-Pice, 1914C, *obv* GEORGE V KING EMPEROR (SW 8.395). *Lacquered and hairlined, otherwise brilliant uncirculated.* £100-150



145



146



147

- 145 Bronze Proof Restrike 1/2-Pice, 1915C, *obv* GEORGE V KING EMPEROR (SW 8.397). *Lacquered, brilliant uncirculated.* £100-150
- 146 Bronze Proof Restrike 1/2-Pice, 1916C, *obv* GEORGE V KING EMPEROR (SW 8.399). *Lacquered and hairlined, otherwise brilliant uncirculated.* £100-150
- 147 Bronze Proof Restrike 1/2-Pice, 1917C, *obv* GEORGE V KING EMPEROR (SW 8.401). *Lacquered, brilliant uncirculated.* £100-150



148



149



150

- 148 Bronze Proof Restrike 1/2-Pice, 1919C, *obv* GEORGE V KING EMPEROR (SW 8.405). *Lacquered, brilliant uncirculated.* £100-150
- 149 Bronze Proof Restrike 1/2-Pice, 1920C, *obv* GEORGE V KING EMPEROR (SW 8.407). *Lacquered, a few light hairlines, otherwise brilliant uncirculated.* £100-150
- 150 Bronze Proof Restrike 1/2-Pice, 1921C, *obv* GEORGE V KING EMPEROR (SW 8.409). *Lacquered, brilliant uncirculated.* £100-150



151



152



153

- 151 Bronze Proof Restrike 1/2-Pice, 1922C, *obv* GEORGE V KING EMPEROR (SW 8.501). *Lacquered, a few light hairlines, otherwise brilliant uncirculated.* £100-150
- 152 Bronze Proof Restrike 1/2-Pice, 1923C, *obv* GEORGE V KING EMPEROR (SW 8.503). *Lacquered, moderate hairlines, otherwise brilliant uncirculated.* £100-150
- 153 Bronze Proof Restrike 1/2-Pice, 1924C, *obv* GEORGE V KING EMPEROR (SW 8.505). *Lacquered, a few light hairlines, otherwise brilliant uncirculated.* £100-150



154



155

- 154 Bronze Proof Restrike 1/2-Pice, 1925C, *obv* GEORGE V KING EMPEROR (SW 8.507). *Lacquered, brilliant uncirculated.* £100-150
- 155 Bronze Proof Restrike 1/2-Pice, 1927C, *obv* GEORGE V KING EMPEROR (SW 8.511). *Lacquered, a few moderate hairlines, otherwise brilliant uncirculated.* £100-150



156



157



158

- 156 Bronze Proof Restrike 1/2-Pice, 1929C, *obv* GEORGE V KING EMPEROR (SW 8.515). *Lacquered, a few light hairlines, otherwise brilliant uncirculated.* £100-150
- 157 Bronze Proof Restrike 1/2-Pice, 1930C, *obv* GEORGE V KING EMPEROR (SW 8.517). *Lacquered, a few light hairlines, otherwise brilliant uncirculated.* £100-150
- 158 Bronze Proof Restrike 1/2-Pice, 1932C, *obv* GEORGE V KING EMPEROR (SW 8.521). *Lacquered, a few light hairlines, otherwise brilliant uncirculated.* £100-150



159



160



161

- 159 Bronze Proof Restrike 1/2-Pice, 1933C, *obv* GEORGE V KING EMPEROR (SW 8.523). *Lacquered, a few light hairlines, otherwise brilliant uncirculated.* £100-150
- 160 Bronze Proof Restrike 1/2-Pice, 1934C, *obv* GEORGE V KING EMPEROR (SW 8.525). *Lacquered, brilliant uncirculated.* £100-150
- 161 Bronze Proof Restrike 1/2-Pice, 1935C, *obv* GEORGE V KING EMPEROR (SW 8.527). *Lacquered, brilliant uncirculated.* £100-150



162



163



164

- 162 Bronze Proof Restrike 1/2-Pice, 1936C, *obv* GEORGE V KING EMPEROR (SW 8.529). *Lacquered, brilliant uncirculated.* £100-150
- 163 Bronze Proof Restrike 1/2-Pice, 1938C, proof only date, *obverse* 1, *obv* GEORGE VI KING EMPEROR (SW 9.254). *Lacquered, brilliant uncirculated.* £150-200
- 164 Bronze Proof Restrike 1/2-Pice, 1938C, *obverse* 2, *obv* GEORGE VI KING EMPEROR (SW unlisted). *Lacquered, a few light hairlines, otherwise brilliant uncirculated.* £180-220



165



166

- 165 Bronze Proof Restrike 1/2-Pice, 1939C, *obverse* 1, *obv* GEORGE VI KING EMPEROR (SW 9.256). *Lacquered, brilliant uncirculated.* £180-220
- 166 Bronze Proof Restrike 1/2-Pice, 1939C, *obverse* 2, *obv* GEORGE VI KING EMPEROR (SW 9.257). *Lacquered, brilliant uncirculated.* £100-150



167



168



169

- 167 Bronze Original Proof 1/2-Pice, 1939B, obverse 1, *obv* GEORGE VI KING EMPEROR (SW 9.257). *Darkly toned, choice uncirculated.* £300-500

ex Spencer collection
ex Pridmore collection, with ticket

- 168 Bronze Proof Restrike 1/2-Pice, 1942B, obverse 2, *obv* GEORGE VI KING EMPEROR (SW 9.263). *Lacquered, a few light hairlines, otherwise brilliant uncirculated.* £250-350

- 169 Bronze Proof Restrike 1/2-Pice Mule, 1942B, obverse 1, *obv* GEORGE VI KING EMPEROR (SW 9.263a). *Lacquered, a few light hairlines, otherwise brilliant uncirculated.* £250-350



170



171

- 170 Copper Proof Restrike 1/4-Anna, 1835C, slanted top to the "1" in the date, *rev* EAST INDIA COMPANY, 18 berries (SW 1.89). *Lacquered, brilliant uncirculated.* £200-300

- 171 Copper Original Proof 1/4-Anna, 1835M, slanted top to the "1" in the date, *rev* EAST INDIA COMPANY, 17 berries (SW 1.99). *Toned, uncirculated.* £500-800

ex Pridmore collection, with ticket



- 172 Gold Proof Restrike 1/4-Anna, 1835C, off-metal strike in gold, *rev* EAST INDIA COMPANY (SW 1.92). *Gem uncirculated.* £2000-3000



- 173 Copper Original Proof ¼-Anna, 1858, *rev* EAST INDIA COMPANY, double leaves at top of wreath (SW 3.81). *Toned, very light spotting, otherwise uncirculated.* £500-800



- 174 Copper Proof Restrike ¼-Anna, 1862C, *obv* VICTORIA QUEEN (SW 4.162). *Lacquered, brilliant uncirculated.* £250-350



- 175 Copper Original Proof ¼-Anna, 1862C, *obv* VICTORIA QUEEN (SW 4.162). *Light brown tone, uncirculated.* £400-600

ex Farouk collection (as noted on the back of the Pridmore ticket)
ex Pridmore collection, with ticket

- 176 Copper Original Proof ¼-Anna, 1862C, *obv* VICTORIA QUEEN (SW 4.167). *Toned, choice uncirculated.* £400-600



- 177 Gold Early Proof Restrike ¼-Anna, 1862C, off-metal strike in gold, *obv* VICTORIA QUEEN (SW 4.164). *A few light marks in the fields, otherwise very pleasing, otherwise uncirculated.* £3000-4000



178



179

178 Copper Original Proof 1/4-Anna, 1875C, *obv* VICTORIA QUEEN (SW 5.50). *Toned, choice uncirculated.* £400-600

179 Copper Original Proof 1/4-Anna, 1876C, *obv* VICTORIA QUEEN (SW 5.55). *Toned, choice uncirculated.* £400-600



180



181

180 Copper Proof Restrike 1/4-Anna, 1877C, *obv* VICTORIA EMPRESS (SW 6.487). *Lacquered, light hairlines and a touch of reverse tone, otherwise brilliant uncirculated.* £200-300

181 Copper Original Proof 1/4-Anna, 1878C, *obv* VICTORIA EMPRESS (SW 6.491). *Toned, choice uncirculated.* £400-600

ex JJ Pittman collection



182



183

182 Copper Original Proof 1/4-Anna, 1879C, *obv* VICTORIA EMPRESS (SW 6.493). *Toned, choice uncirculated.* £400-600

ex Pridmore collection, with ticket

183 Copper Early Proof Restrike 1/4-Anna, 1890C, *obv* VICTORIA EMPRESS (SW 6.512). *Toned, choice uncirculated.* £200-300



184



185

184 Copper Original Proof 1/4-Anna, 1890C, *obv* VICTORIA EMPRESS (SW 6.512). *Lightly toned, a few very light marks, otherwise uncirculated.* £300-500

ex JJ Pittman collection

185 Copper Original Proof 1/4-Anna, 1891C, *obv* VICTORIA EMPRESS (SW 6.514). *Toned, choice uncirculated.* £400-600



186 Silver Proof Restrike 1/4-Anna, 1891C, off-metal strike in silver, *obv* VICTORIA EMPRESS (SW 6.515). *Lacquering a little uneven, choice uncirculated.* £800-1000



187 Copper Proof Restrike 1/4-Anna, 1891B, *obv* VICTORIA EMPRESS (SW 6.517). *Lacquered, brilliant uncirculated.* £200-300



188 Copper Proof Restrike 1/4-Anna, 1892C, *obv* VICTORIA EMPRESS (SW 6.520). *Brilliant about uncirculated, some marks and once cleaned.* £100-150

ex Remick collection, therefore cleaned



189 Copper Original Proof 1/4-Anna, 1892C, *obv* VICTORIA EMPRESS (SW 6.520). *Lightly toned with mint red, uncirculated.* £400-600



190 Silver Early Proof Restrike 1/4-Anna, 1892C, off-metal strike in silver, *obv* VICTORIA EMPRESS (SW 6.521). *Toned, choice uncirculated.* £800-1000



- 191 Gold Proof Restrike $\frac{1}{4}$ -Anna, 1892C, off-metal strike in gold, *obv* VICTORIA EMPRESS (SW 6.522). *Choice uncirculated.* £1000-1500



- 192 Copper Early Proof Restrike $\frac{1}{4}$ -Anna, 1893C, *obv* VICTORIA EMPRESS (SW 6.524). *Toned, choice uncirculated.* £300-400



- 193 Silver Early Proof Restrike $\frac{1}{4}$ -anna, 1893C, off-metal strike in silver, *obv* VICTORIA EMPRESS (SW 6.525). *Toned with a few marks, otherwise uncirculated.* £800-1000



- 194 Gold Proof Restrike $\frac{1}{4}$ -Anna, 1893C, off-metal strike in gold, *obv* VICTORIA EMPRESS (SW 6.526). *A few very light marks and some reverse cloudiness, otherwise uncirculated.* £1000-1500



195



196

195 Copper Original Proof 1/4-Anna, 1894C, *obv* VICTORIA EMPRESS (SW 6.528). Moderately toned, superb uncirculated. £500-800

196 Silver Proof Restrike 1/4-Anna, 1894C, off-metal strike in silver, *obv* VICTORIA EMPRESS (SW 6.529). A few hairlines in the lacquer, otherwise pleasing uncirculated. £800-1000



197



198

197 Copper Proof Restrike 1/4-Anna, 1895C, probably an early restrike, *obv* VICTORIA EMPRESS (SW 6.531). Once cleaned but still attractive, about uncirculated. £100-150

ex Remick collection, therefore cleaned

198 Silver Early Proof Restrike 1/4-Anna, 1895C. off-metal strike in silver, *obv* VICTORIA EMPRESS (SW 6.532). In PCGS holder, graded PR65 Cameo. £800-1000



199



200

199 Copper Early Proof Restrike 1/4-Anna, 1897C, *obv* VICTORIA EMPRESS (SW 6.539). Moderately toned, choice uncirculated. £300-400

200 Silver Early Proof Restrike 1/4-Anna, 1897C, off-metal strike in silver, *obv* VICTORIA EMPRESS (SW 6.540). In PCGS holder, graded PR63, toned. £500-800



201 Gold Early Proof Restrike 1/4-Anna, 1897C, off-metal strike in gold, *obv* VICTORIA EMPRESS (SW 6.541). A number of handling marks but the bust still nicely frosted, otherwise uncirculated. £1000-1500



202



203

- 202 Copper Proof Restrike 1/4-Anna, 1898C, *obv* VICTORIA EMPRESS (SW 6.543). *Lacquered, two small spots on the obverse, otherwise brilliant uncirculated.* £150-200

- 203 Copper Original Proof 1/4-Anna, 1898C, *obv* VICTORIA EMPRESS (SW 6.543). *Toned, choice uncirculated.* £400-600



204



205

- 204 Silver Early Proof Restrike 1/4-Anna, 1898C, *off-metal strike in silver, obv* VICTORIA EMPRESS (SW 6.544). *Toned, a few small marks, otherwise uncirculated.* £500-800

- 205 Silver Proof Restrike 1/4-Anna, 1899C, *off-metal strike in silver, obv* VICTORIA EMPRESS (SW 6.548). *In PCGS holder, graded PR62.* £800-1000



206



207

- 206 Copper Original Proof 1/4-Anna, 1900C, *obv* VICTORIA EMPRESS (SW 6.550). *Uncirculated, obverse lightly wiped.* £250-350

The obverse has been lightly wiped making a decision on when this was struck difficult, but the reverse has all the characteristics of an original proof

- 207 Silver Proof Restrike 1/4-Anna, 1900C, *off-metal strike in silver, obv* VICTORIA EMPRESS (SW 6.552). *Laquered with hairlines in the lacquer, otherwise uncirculated.* £450-650



208



209

- 208 Copper Proof Restrike 1/4-Anna, 1901C, *obv* VICTORIA EMPRESS (SW 6.555). *Lacquered, brilliant uncirculated.* £200-300

- 209 Copper Original Proof 1/4-Anna, 1901C, *obv* VICTORIA EMPRESS (SW 6.555). *Choice uncirculated.* £400-600



210



211

- 210 Silver Proof Restrike 1/4-Anna, 1910C, off-metal strike in silver, *obv* VICTORIA EMPRESS (SW 6.556). *The lacquer uneven and cloudy, otherwise uncirculated.* £400-600
- 211 Copper Original Proof 1/4-Anna, 1903C, *obv* EDWARD VII KING & EMPEROR (SW 7.158). *Lightly toned, superb uncirculated.* £400-600



212



213

- 212 Copper Proof Restrike 1/4-Anna, 1904C, *obv* EDWARD VII KING & EMPEROR (SW 7.161). *Lacquered, light hairlines, otherwise brilliant uncirculated.* £150-200
ex J J Pittman collection
- 213 Copper Original Proof 1/4-Anna, 1904C, *obv* EDWARD VII KING & EMPEROR (SW 7.161). *Moderately toned, choice uncirculated.* £350-450



214



215

- 214 Copper Proof Restrike 1/4-Anna, 1905C, *obv* EDWARD VII KING & EMPEROR (SW 7.166). *Lacquered, brilliant uncirculated.* £200-300
ex J J Pittman collection
- 215 Copper Original Proof 1/4-Anna, 1905C, *obv* EDWARD VII KING & EMPEROR (SW 7.166). *Moderately toned, choice uncirculated.* £350-450



216



217

- 216 Copper Proof Restrike 1/4-Anna, 1906C, *obv* EDWARD VII KING & EMPEROR (SW 7.169). *Lacquered, brilliant uncirculated.* £150-200
- 217 Bronze Original Proof 1/4-Anna, 1906C, *obv* EDWARD VII KING & EMPEROR (SW 7.171). *Moderately toned, choice uncirculated.* £350-450



218

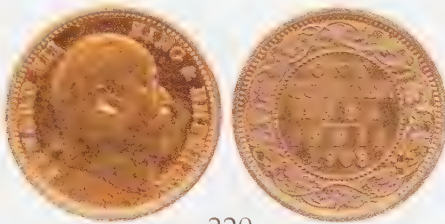


219

- 218 Bronze Early Proof Restrike 1/4-Anna, 1907C, *obv* EDWARD VII KING & EMPEROR (SW 7.174). *Moderately toned, choice uncirculated.* £300-500

Few early Proof Restrikes are known for King Edward VII

- 219 Bronze Proof Restrike 1/4-Anna, 1908C, *obv* EDWARD VII KING & EMPEROR (SW 7.176). *Lacquered, brilliant uncirculated.* £150-250



220



221

- 220 Bronze Original Proof 1/4-Anna, 1908C, *obv* EDWARD VII KING & EMPEROR (SW 7.176). *Moderately toned, choice uncirculated.* £350-450

- 221 Bronze Proof Restrike 1/4-Anna, 1909C, *obv* EDWARD VII KING & EMPEROR (SW 7.179). *Lacquered, light hairlines, otherwise brilliant uncirculated.* £150-250

ex J J Pittman collection



222



223

- 222 Bronze Original Proof 1/4-Anna, 1909C, *obv* EDWARD VII KING & EMPEROR (SW 7.179). *Obverse rather heavily toned, the reverse mostly red, uncirculated.* £350-450

- 223 Bronze Proof Restrike 1/4-Anna, 1910C, *obv* EDWARD VII KING & EMPEROR (SW 7.181). *Lacquered, light hairlines, otherwise brilliant uncirculated.* £200-300



224



225

- 224 Bronze Proof Restrike 1/4-Anna, 1911C, *obv* GEORGE V KING EMPEROR (SW 8.336). *Lacquered, brilliant uncirculated.* £500-800

- 225 Bronze Original Proof 1/4-Anna, 1912C, *obv* GEORGE V KING EMPEROR (SW 8.338). *Toned, choice uncirculated.* £300-400



226



227

226 Bronze Proof Restrike 1/4-Anna, 1913C, *obv* GEORGE V KING EMPEROR (SW 8.340). *Lacquered, numerous hairlines, otherwise brilliant uncirculated.* £200-300

227 Bronze Proof Restrike 1/4-Anna, 1914C, *obv* GEORGE V KING EMPEROR (SW 8.342). *Lacquered, brilliant uncirculated.* £200-300



228



229

228 Bronze Proof Restrike 1/4-Anna, 1916C, *obv* GEORGE V KING EMPEROR (SW 8.344). *Lacquered, a few small spots, otherwise brilliant uncirculated.* £200-300

229 Bronze Proof Restrike 1/4-Anna, 1917C, *obv* GEORGE V KING EMPEROR (SW 8.346). *Lacquered, brilliant uncirculated.* £200-300



230



231

230 Bronze Proof Restrike 1/4-Anna, 1918C, *obv* GEORGE V KING EMPEROR (SW 8.348). *Lacquered, light hairlines, otherwise brilliant uncirculated.* £150-250

231 Bronze Proof Restrike 1/4-Anna, 1919C, *obv* GEORGE V KING EMPEROR (SW 8.350). *Lacquered, two spots on the edge where the lacquer was not applied have toned, otherwise brilliant uncirculated.* £150-250



232



233

232 Bronze Proof Restrike 1/4-Anna, 1921C, proof only date, *obv* GEORGE V KING EMPEROR (SW 8.353). *Lacquered, light hairlines, otherwise brilliant uncirculated.* £500-800

233 Bronze Proof Restrike 1/4-Anna, 1924B, *obv* GEORGE V KING EMPEROR (SW 8.355). *Lacquered, brilliant uncirculated.* £150-250



234



235

234 Bronze Proof Restrike 1/4-Anna, 1925B, *obv* GEORGE V KING EMPEROR (SW 8.358). *Lacquered, tone spot on the edge where the lacquer was not applied, otherwise brilliant uncirculated.* £150-250

235 Bronze Proof Restrike 1/4-Anna, 1926C, *obv* GEORGE V KING EMPEROR (SW 8.360). *Lacquered, brilliant uncirculated.* £150-250



236



237

236 Bronze Proof Restrike 1/4-Anna, 1926B, *obv* GEORGE V KING EMPEROR (SW 8.362). *Lacquered, brilliant uncirculated.* £150-250

237 Bronze Proof Restrike 1/4-Anna, 1927C, *obv* GEORGE V KING EMPEROR (SW 8.364). *Lacquered, brilliant uncirculated.* £150-250



238



239

238 Bronze Proof Restrike 1/4-Anna, 1927B, *obv* GEORGE V KING EMPEROR (SW 8.366). *Lacquer removed, allowing the coin to tone somewhat, otherwise uncirculated.* £150-250

ex Pridmore collection, with ticket

239 Bronze Proof Restrike 1/4-Anna, 1928B, *obv* GEORGE V KING EMPEROR (SW 8.370). *Lacquered, brilliant uncirculated.* £150-250



240



241

240 Bronze Proof Restrike 1/4-Anna, 1929C, *obv* GEORGE V KING EMPEROR (SW 8.372). *Lacquered, brilliant uncirculated.* £150-250

241 Bronze Proof Restrike 1/4-Anna, 1930C, *obv* GEORGE V KING EMPEROR (SW 8.374). *Lacquered, light hairlines, otherwise brilliant uncirculated.* £150-200



242



243

242 Bronze Proof Restrike 1/4-Anna, 1930B, *obv* GEORGE V KING EMPEROR (SW 8.376). *Lacquered, brilliant uncirculated.* £150-250

243 Bronze Proof Restrike 1/4-Anna, 1931C, *obv* GEORGE V KING EMPEROR (SW 8.379). *Lacquered, brilliant uncirculated.* £150-250



244



245

244 Bronze Proof Restrike 1/4-Anna, 1933C, *obv* GEORGE V KING EMPEROR (SW 8.381). *Lacquer applied unevenly, brilliant uncirculated.* £150-250

245 Bronze Proof Restrike 1/4-Anna, 1934C, *obv* GEORGE V KING EMPEROR (SW 8.383). *Lacquered, light hairlines, otherwise brilliant uncirculated.* £150-250



246



247

246 Bronze Proof Restrike 1/4-Anna, 1935C, *obv* GEORGE V KING EMPEROR (SW 8.385). *Lacquered, brilliant uncirculated.* £150-250

247 Bronze Proof Restrike 1/4-Anna, 1936C, *obv* GEORGE V KING EMPEROR (SW 8.387). *Lacquered, brilliant uncirculated.* £150-250



248



249

248 Bronze Proof Restrike 1/4-Anna, 1936B, *obv* GEORGE V KING EMPEROR (SW 8.389). *Lacquered, brilliant uncirculated.* £150-250

249 Bronze Proof Restrike 1/4-Anna, 1938C, *obverse 1, obv* GEORGE VI KING EMPEROR (SW 9.220). *Lacquered, light hairlines, otherwise brilliant uncirculated.* £100-150



250



251

250 Bronze Proof Restrike 1/4-Anna, 1938B, obverse 1, *obv* GEORGE VI KING EMPEROR (SW unlisted). *Lacquered, brilliant uncirculated.* £200-300

251 Bronze Original Proof 1/4-Anna, 1939B, obverse 1, *obv* GEORGE VI KING EMPEROR (SW 9.225). *Mostly toned, some mint red, choice uncirculated.* £300-500

ex Spencer collection

ex Pridmore collection, with ticket



252



253

252 Bronze Proof Restrike 1/4-Anna, 1939B, obverse 2, *obv* GEORGE VI KING EMPEROR (SW 9.226). *Lacquered, brilliant uncirculated.* £300-500

253 Bronze Original Proof 1/4-Anna, 1940C, obverse 2, *obv* GEORGE VI KING EMPEROR (SW 9.228). *A little discolouration on the edge, otherwise very pleasant, uncirculated.* £250-450



254



255

254 Bronze Proof Restrike 1/4-Anna, 1941C, obverse 2, *obv* GEORGE VI KING EMPEROR (see SW 9.233, this date not listed). *Lacquered, some marks in the lacquer, uncirculated.* £250-450

255 Bronze Proof Restrike 1/4-Anna, 1942C, obverse 2, *obv* GEORGE VI KING EMPEROR (SW 9.234). *Lacquered, light hairlines, otherwise brilliant uncirculated.* £150-250



256



257

256 Bronze Proof Restrike Pice, 1944B, with flat crown (SW 9.241a). *Red and brown, choice uncirculated.* £100-150

257 Bronze Original Proof Pice, 1944L (SW 9.243). *Red and brown, uncirculated.* £200-300

ex J J Pittman collection



- 258 Bronze Proof Restrike Pice, 1945B (SW 9.247a). *Lacquered, brilliant uncirculated.* £100-150
- 259 Bronze Original Proof Pice, 1945L (SW 9.248a). *Red and brown, uncirculated.* £200-300
ex J J Pittman collection



- 260 Bronze Proof Restrike Pice, 1947B (SW 9.253). *Lacquered, one edge spot, otherwise brilliant uncirculated.* £100-150



- 261 Bronze Proof Restrike 1/2-Anna, 1835B, *rev* EAST INDIA COMPANY (SW 1.80). *Lacquered, brilliant uncirculated.* £300-400



- 262 Copper Original Proof 1/2-Anna, 1835B, *rev* EAST INDIA COMPANY (SW 1.81). *Red and brown, choice uncirculated.* £500-800



263 Gold Proof Restrike $\frac{1}{2}$ -Anna, 1835B, off-metal strike in gold, *rev* EAST INDIA COMPANY (SW 1.82). *Superb uncirculated.* £2000-3000



264 Copper Original Proof $\frac{1}{2}$ -Anna, 1862C, obverse B, *obv* VICTORIA QUEEN, *rev* flat topped "1" in date (SW 4.156). *Red and brown, choice uncirculated.* £1500-2000



265 Copper Proof Restrike ½-Anna, 1862C, obverse B, *obv* VICTORIA QUEEN, *rev* flat topped "1" in date (SW 4.156). *Lacquered, light hairlines, otherwise brilliant uncirculated.* £500-800



266 Copper Proof Restrike ½-Anna, 1862C, obverse B, *obv* VICTORIA QUEEN, *rev* slanted top to the "1" in date (SW 4.152). *Lacquered, light hairlines, otherwise brilliant uncirculated.* £500-800



267 Silver Early Proof Restrike ½-Anna, 1862C, off-metal strike in silver, obverse B, *obv* VICTORIA QUEEN (SW 4.153). *Toned, choice uncirculated.* £2000-3000

ex Farouk collection (as noted on the back of the Pridmore ticket)
ex Pridmore collection, with ticket



268 Copper Original Proof $\frac{1}{2}$ -Anna, 1875C, obverse B, *obv* VICTORIA QUEEN (SW 5.46). *Nicely toned, choice uncirculated.* £1000-1500



269 Gold Proof Restrike $\frac{1}{2}$ -Anna, 1877B, off-metal strike in gold, obverse B, *obv* VICTORIA EMPRESS (SW 6.460). *Choice uncirculated.* £3000-4000



270



271

270 Copper Proof Restrike ½-Anna, 1877B, obverse B, *obv* VICTORIA EMPRESS (SW 6.462). *Lightly toned, choice uncirculated.* £500-800

271 Copper Proof Restrike ½-Anna, 1878C, obverse B, *obv* VICTORIA EMPRESS (SW 6.463a). *Lacquered, brilliant uncirculated.* £500-800



272 Copper Original Proof ½-Anna, 1878C, obverse C, *obv* VICTORIA EMPRESS (SW 6.463). *Toned, choice uncirculated.* £1000-1500



273 Gold Proof Restrike ½-Anna, 1878C, off-metal strike in gold, obverse B, *obv* VICTORIA EMPRESS (SW 6.464). *Numerous light hairlines, otherwise brilliant uncirculated.* £3000-4000



- 274 Copper Proof Restrike ½-Anna, 1879C, probably an early restrike, obverse C, *obv* VICTORIA EMPRESS (SW 6.466; proof only date). *Lacquer has been removed leaving the coin somewhat dull, but the edges suggest an earlier striking, otherwise uncirculated.* £800-1000



- 275 Copper Original Proof ½-Anna, 1890C, obverse C, *obv* VICTORIA EMPRESS (SW 6.471). *Toned, choice uncirculated.* £1000-1500



- 276 Gold Proof Restrike ½-Anna, 1890C, off-metal strike in gold, obverse B, *obv* VICTORIA EMPRESS (SW 6.472). *Some light handling marks and a bit of cloudiness in the reverse field, still pleasing, otherwise uncirculated.* £2500-3000



277 Copper Proof Restrike ½-Anna, 1890B, obverse B, *obv* VICTORIA EMPRESS (SW 6.473). *Lacquered, brilliant uncirculated, lacquering uneven on the obverse.* £500-800



278 Copper Original Proof ½-Anna, 1891C, obverse C, *obv* VICTORIA EMPRESS (SW 6.474). *Darkly toned, choice uncirculated.* £1000-1500



279 Gold Proof ½-Anna, 1891C, off-metal strike in gold, obverse B, *obv* VICTORIA EMPRESS. *Very light hairlines, brilliant uncirculated.* £3000-4000



280 Copper Proof Restrike ½-Anna, 1891C, obverse B, *obv* VICTORIA EMPRESS (SW 6.476). *Lacquered, a few spots and light hairlines, otherwise brilliant uncirculated.* £400-600



281 Copper Original Proof ½-Anna, 1892C, obverse B, *obv* VICTORIA EMPRESS (SW 6.478). *Moderately toned, choice uncirculated.* £1000-1500



282 Silver Early Proof Restrike ½-Anna, 1892C, off-metal strike in silver, obverse C, *obv* VICTORIA EMPRESS (SW 6.479). *Choice uncirculated.* £1500-2000

ex Pridmore collection, with ticket



283 Gold Early Proof Restrike ½-Anna, 1892C, off-metal strike in gold, obverse C, *obv* VICTORIA EMPRESS (SW 6.480). *Light hairlines, otherwise uncirculated.* £3000-4000



284 Copper Original Proof ½-Anna, 1893C, obverse C, *obv* VICTORIA EMPRESS (SW 6.481). *Darkly toned, superb uncirculated.* £1000-1500



285 Silver Early Proof Restrike ½-Anna, 1893C, silver off-metal strike, obverse CC, *obv* VICTORIA EMPRESS (SW 6.482). *Toned, choice uncirculated.* £1500-2000



286 Gold Early Proof Restrike ½-Anna, 1893C, off-metal strike in gold, obverse C, *obv* VICTORIA EMPRESS (SW 6.483). *Choice uncirculated.* £3000-4000

ex Farouk collection, Palace Collections of Egypt, Sothebys, Cairo, 1954



- 287 Cupro-nickel Proof Restrike ½-Anna, 1940C, proof only date, *obv* GEORGE VI KING EMPEROR (SW 9.194). *Light hairlines, otherwise uncirculated.* £300-500

ex Pridmore collection, with ticket

- 288 Nickel-brass Proof Restrike ½-Anna, 1942B, *obv* GEORGE VI KING EMPEROR (SW 9.199a). *Light handling marks, otherwise uncirculated.* £100-150

ex Pridmore collection, with ticket



- 289 Nickel-brass Proof Restrike ½-Anna, 1943B, *obv* GEORGE VI KING EMPEROR (SW 9.201). *Light handling marks, otherwise uncirculated.* £100-150

ex Pridmore collection, with ticket

- 290 Nickel-brass Proof Restrike ½-Anna, 1944B, *obv* GEORGE VI KING EMPEROR (SW 9.204). *Light handling marks, otherwise uncirculated.* £100-150

ex Pridmore collection, with ticket



- 291 Gilt-copper Restrike ½-Anna, 1944C, off-metal strike in copper(?), *obv* GEORGE VI KING EMPEROR (SW 9.204). *In NGC holder, graded PF64.* £200-300

We are not sure about this grading assessment and view it more as a laquered proof restrike. The disadvantage of third-party holders is that one is not able to weigh the coin or to undertake other tests, such as "specific gravity".



- 292 Nickel-brass Proof Restrike ½-Anna, 1945C, *obv* GEORGE VI KING EMPEROR (SW 9.206). *Light handling marks, otherwise uncirculated.* £100-150

ex Pridmore collection, with ticket

- 293 Cupro-nickel Proof Restrike ½-Anna, 1946B, *obv* GEORGE VI KING EMPEROR (SW 9.212). *Light handling marks, otherwise uncirculated.* £100-150

ex Pridmore collection, with ticket



294

295

296

- 294 Cupro-nickel Original Proof ½-Anna, 1946C, *obv* GEORGE VI KING EMPEROR (SW 9.210). *A few handling marks, not lacquered, otherwise uncirculated.* £200-300

ex J J Pittman collection

- 295 Cupro-nickel Original Proof ½-Anna, 1946C (SW 9.210). *About uncirculated.* £200-300

As we have noted before, the original proofs produced close to the start of the restrrike series make it difficult to discern the differences between original and restrrike unless you have both in hand. Comparing with the restrrike in lot 293, one can see the differences in the fields and on the edge, though minor, they are important reference points.

- 296 Cupro-nickel Proof Restrike ½-Anna, 1947C, *obv* GEORGE VI KING EMPEROR (SW 9.215). *Light handling marks, otherwise uncirculated.* £100-150

ex Pridmore collection, with ticket



297

298

299

- 297 Cupro-nickel Original Proof ½-Anna, 1947C, *obv* GEORGE VI KING EMPEROR (SW 9.215). *Choice uncirculated.* £250-400

- 298 Cupro-nickel Proof Restrike Anna, 1907B, *obv* EDWARD VII KING & EMPEROR (SW 7.145). *Lacquered, brilliant uncirculated.* £300-400

ex J J Pittman collection

- 299 Cupro-nickel Original Proof Anna, 1907B, *obv* EDWARD VII KING & EMPEROR (SW 7.145). *Choice uncirculated, with somewhat of the matte finish one would expect on an Edward VII Proof.* £500-800



300

301

- 300 Cupro-nickel Original Proof Anna, 1908B, *obv* EDWARD VII KING & EMPEROR (SW 7.147). *Choice uncirculated, uneven tone, but a deeper mirror surface than the previous lot.* £600-800

- 301 Cupro-nickel Proof Restrike Anna, 1909B, *obv* EDWARD VII KING & EMPEROR (SW 7.149). *Lacquered, brilliant uncirculated.* £300-400



302

303

- 302 Cupro-nickel Original Proof Anna, 1909B, *obv* EDWARD VII KING & EMPEROR (SW 7.149). *Dull tone, choice uncirculated.* £600-800

- 303 Cupro-nickel Proof Restrike Anna, 1910B, *obv* EDWARD VII KING & EMPEROR (SW 7.151). *Lacquered, brilliant uncirculated.* £400-600



304 Cupro-nickel Proof Restrike Anna, 1910, without B mintmark, *obv* EDWARD VII KING & EMPEROR (SW 7.152). *Lacquered, brilliant uncirculated.* £600-800



305 Cupro-nickel Original Proof Anna, 1912B, *obv* GEORGE V KING EMPEROR (SW 8.278). *A few light marks, otherwise uncirculated.* £300-500

306 Cupro-nickel Original Proof Anna, 1913B, *obv* GEORGE V KING EMPEROR (SW 8.280). *Some toning, otherwise choice uncirculated.* £300-500

307 Copper-nickel Proof Restrike Anna, 1913B, *obv* GEORGE V KING EMPEROR (SW 8.280). *Lacquered, a few light marks, otherwise brilliant uncirculated.* £200-300



308 Cupro-nickel Proof Restrike Anna, 1915B, *obv* GEORGE V KING EMPEROR (SW 8.284). *Lacquered, brilliant uncirculated.* £200-300

309 Cupro-nickel Proof Restrike Anna, 1916B, *obv* GEORGE V KING EMPEROR (SW 8.286). *Lacquered, a few light marks, otherwise brilliant uncirculated.* £200-300

310 Cupro-nickel Proof Restrike Anna, 1917B, *obv* GEORGE V KING EMPEROR (SW 8.288). *Lacquered, brilliant uncirculated.* £200-300



311 Cupro-nickel Proof Restrike Anna, 1918B, *obv* GEORGE V KING EMPEROR (SW 8.290). *Lacquered, a few light marks, otherwise brilliant uncirculated.* £200-300

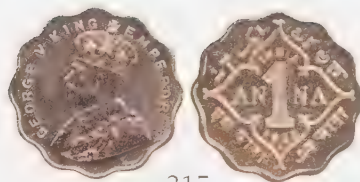
312 Cupro-nickel Proof Restrike Anna, 1919B, *obv* GEORGE V KING EMPEROR (SW 8.293). *Lacquered, a few light marks, otherwise brilliant uncirculated.* £200-300



313



314



315

- 313 Cupro-nickel Proof Restrike Anna, 1920B, *obv* GEORGE V KING EMPEROR (SW 8.295). *Lacquered, brilliant uncirculated.* £200-300
- 314 Cupro-nickel Proof Restrike Anna, 1924C, *obv* GEORGE V KING EMPEROR (SW 8.299). *Lacquered, brilliant uncirculated.* £200-300
- 315 Cupro-nickel Proof Restrike Anna, 1925B, *obv* GEORGE V KING EMPEROR (SW 8.305). *Lacquered, a few light marks, otherwise brilliant uncirculated.* £200-300



316



317



318

- 316 Cupro-nickel Proof Restrike Anna, 1926B, *obv* GEORGE V KING EMPEROR (SW 8.309). *Lacquered, toned area on the reverse where lacquer was not applied properly, otherwise brilliant uncirculated.* £150-250
- 317 Cupro-nickel Proof Restrike Anna, 1927B, *obv* GEORGE V KING EMPEROR (SW 8.313). *Lacquered, brilliant uncirculated.* £200-300
- 318 Cupro-nickel Proof Restrike Anna, 1928C, *obv* GEORGE V KING EMPEROR (SW 8.315). *Patchy tone due to improper lacquering, uncirculated.* £200-300



319



320



321

- 319 Cupro-nickel Proof Restrike Anna, 1928B, *obv* GEORGE V KING EMPEROR (SW 8.317). *Lacquered, brilliant uncirculated.* £200-300
- 320 Cupro-nickel Proof Restrike Anna, 1929C, *obv* GEORGE V KING EMPEROR (SW 8.319). *Lacquered, brilliant uncirculated.* £200-300
- 321 Cupro-nickel Proof Restrike Anna, 1930C, *obv* GEORGE V KING EMPEROR (SW 8.321). *Lacquered, brilliant uncirculated.* £200-300



322



323

- 322 Cupro-nickel Proof Restrike Anna, 1933C, *obv* GEORGE V KING EMPEROR (SW 8.323). *Lacquered, brilliant uncirculated.* £200-300
- 323 Cupro-nickel Proof Restrike Anna, 1934C, *obv* GEORGE V KING EMPEROR (SW 8.325). *Lacquered, brilliant uncirculated.* £200-300



324



325



326

- 324 Cupro-nickel Proof Restrike Anna, 1935C, *obv* GEORGE V KING EMPEROR (SW 8.327). *Lacquered, brilliant uncirculated.* £200-300
- 325 Cupro-nickel Proof Restrike Anna, 1935B, *obv* GEORGE V KING EMPEROR (SW 8.329). *Lacquered, brilliant uncirculated.* £200-300
- 326 Cupro-nickel Proof Restrike Anna, 1936B, *obv* GEORGE V KING EMPEROR (SW 8.332). *The lacquer a little uneven but choice uncirculated.* £200-300



327



328



329

- 327 Cupro-nickel Proof Restrike Anna, 1938C, *obverse 1, obv* GEORGE VI KING EMPEROR (SW 9.144). *Choice uncirculated.* £100-150
- 328 Cupro-nickel Proof Restrike Anna Mule, 1938C, *obverse 2, obv* GEORGE VI KING EMPEROR (SW 9.145). *Light hairlines in the lacquer, otherwise uncirculated.* £100-150
- 329 Cupro-nickel Proof Restrike Anna, 1939C *obverse 2, obv* GEORGE VI KING EMPEROR (SW 9.149a). *The lacquer uneven at the edge, otherwise choice uncirculated.* £100-150



330



331

- 330 Cupro-nickel Proof Restrike Anna, 1939B, *obverse 1, obv* GEORGE VI KING EMPEROR (SW 9.151). *Light handling marks in the lacquer, otherwise uncirculated.* £100-150
- 331 Cupro-nickel Original Proof Anna, 1939B, *obverse 1, obv* GEORGE VI KING EMPEROR (SW 9.151). *A little cloudy, otherwise choice uncirculated.* £350-450

ex Spencer collection
ex Pridmore collection, with ticket



332



333

- 332 Cupro-nickel Proof Restrike Anna, 1939B, *obverse 1, obv* GEORGE VI KING EMPEROR (SW 9.151a). *Choice uncirculated.* £100-150
- 333 Cupro-nickel Proof Restrike Anna Mule, 1940C, *obverse 1, obv* GEORGE VI KING EMPEROR (SW 9.153). *Choice uncirculated.* £150-200



- 334 Gold Proof Restrike Anna, 1940C, off-metal strike in gold, obverse 1, *obv* GEORGE VI KING EMPEROR (SW 9.154). *Light marks, otherwise uncirculated.* £1500-2000



- 335 Cupro-nickel Proof Restrike Anna, 1940C, obverse 2, *obv* GEORGE VI KING EMPEROR (SW 9.156). *Choice uncirculated.* £150-200
- 336 Cupro-nickel Proof Restrike Anna, 1941C, obverse 2, *obv* GEORGE VI KING EMPEROR (SW 9.161). *Choice uncirculated.* £150-250
- 337 Cupro-nickel Proof Restrike Anna, 1941B, obverse 2, *obv* GEORGE VI KING EMPEROR (SW 9.163). *Choice uncirculated.* £150-250



- 338 Cupro-nickel Proof Restrike Anna Mule, 1941B, obverse 1, *obv* GEORGE VI KING EMPEROR (SW 9.164). *Choice uncirculated.* £200-300
ex Pridmore collection, with ticket
- 339 Cupro-nickel Proof Restrike Anna, 1942C, obverse 2, *obv* GEORGE VI KING EMPEROR (SW 9.166). *Light hairlines, otherwise uncirculated.* £200-300
- 340 Cupro-nickel Proof Restrike Anna Mule, 1942C, obverse 1, *obv* GEORGE VI KING EMPEROR (SW 9.167). *Choice uncirculated.* £200-300



341



342



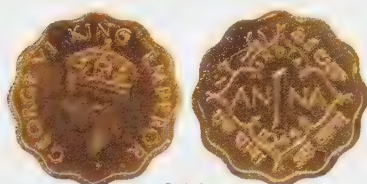
343

- 341 Nickel-brass Proof Restrike Anna Mule, 1943C, obverse 1, *obv* GEORGE VI KING EMPEROR (SW 9.171). *Choice uncirculated.* £250-350

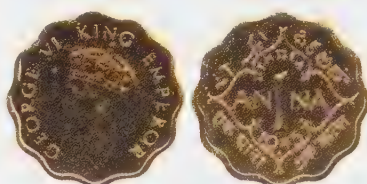
1943 was the year the mint decided to increase the size of the numbers in the date

- 342 Nickel-brass Proof Restrike Anna Mule, 1944C, obverse 1, *obv* GEORGE VI KING EMPEROR (SW 9.175). *Choice uncirculated.* £250-350

- 343 Nickel-brass Proof Restrike Anna Mule, 1945C, obverse 1, *obv* GEORGE VI KING EMPEROR (SW 9.178a). *Choice uncirculated.* £250-350



344



345



346

- 344 Nickel-brass Proof Restrike Anna, 1945B, obverse 2, *obv* GEORGE VI KING EMPEROR (SW 9.180). *Light hairlines, otherwise uncirculated.* £200-300

- 345 Nickel-brass Proof Restrike Anna Mule, 1945B, obverse 1, *obv* GEORGE VI KING EMPEROR (SW 9.181). *Choice uncirculated.* £250-350

- 346 Cupro-nickel Original Proof Anna, 1946C, obverse 2, *obv* GEORGE VI KING EMPEROR (SW 9.183). *A little cloudy, otherwise choice uncirculated.* £350-450

ex J J Pittman collection



347



348



349

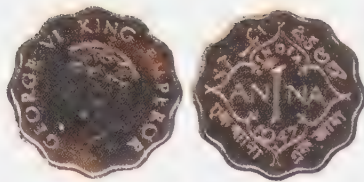
- 347 Cupro-nickel Proof Restrike Anna, 1946C, obverse 2, *obv* GEORGE VI KING EMPEROR (SW 9.183). *Choice uncirculated.* £200-300

- 348 Cupro-nickel Proof Restrike Anna, 1946B, obverse 2, *obv* GEORGE VI KING EMPEROR (SW 9.186). *Lacquer removed, resulting in a few hairlines, otherwise uncirculated.* £150-200

- 349 Cupro-nickel Proof Restrike Anna, 1947C, obverse 2, *obv* GEORGE VI KING EMPEROR (SW 9.189). *Choice uncirculated.* £150-250



- 350 Cupro-nickel Proof Anna (2), 1947B, obverse 2, first a Proof Restrike, the second an earlier strike or an original proof, *obv* GEORGE VI KING EMPEROR (SW 9.192). *Second with similar fields to the original proofs in this collection but with some light marks, the edge is squarer with the die polishing lines on the edge still visible, which is unusual, otherwise both uncirculated.* (2) £450-550



- 351 Cupro-nickel Proof Restrike Anna Mule, 1947B, obverse 1, *obv* GEORGE VI KING EMPEROR (SW 9.183). *Choice uncirculated.* £200-300

ex Pridmore collection, with ticket



- 352 Silver Proof Restrike 2-Annas 1841B, obverse I, *obv* VICTORIA QUEEN, *rev* EAST INDIA COMPANY (SW 2.54). *Nicely toned, no hints of lacquer ever having been applied, uncirculated.* £400-600

Interestingly, with a diamond test mark behind the Queen's head, indicating a later restrike



- 353 Silver Original Proof 2-Annas 1841M, obverse I, *obv* VICTORIA QUEEN, *rev* EAST INDIA COMPANY (SW 255c). *Rather darkly toned, otherwise choice uncirculated with a wonderful pedigree.* £700-900

ex Brand collection (as noted on the Pridmore ticket)

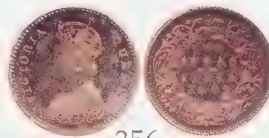
ex Pridmore collection, with ticket



- 354 Silver Proof Restrike 2-Annas 1841C obverse II, *obv* VICTORIA QUEEN, *rev* EAST INDIA COMPANY, 9 berries (SW 3.63). *Lacquered, choice uncirculated.* £300-500



355



356

- 355 Silver Original Proof 2-Annas 1862C, obverse A, *obv* VICTORIA QUEEN, reverse I (SW 4.143). *Lightly toned, a few very light marks under the tone, otherwise uncirculated.* £500-800

- 356 Silver Proof Restrike 2-Annas 1862C, obverse A, *obv* VICTORIA QUEEN, reverse II (SW 4.145). *Very choice, touch of attractive tone, uncirculated.* £300-500



- 357 Gold Early Proof Restrike 2-Annas 1862C, off-metal strike in gold, *obv* VICTORIA QUEEN (SW 4.146). *A few light marks, nicely frosted bust, otherwise uncirculated.* £10,000-15,000



- 358 Silver Original Proof 2-Annas, 1875C, *obv* VICTORIA QUEEN (SW 540). *Toned, superb uncirculated.* £500-800

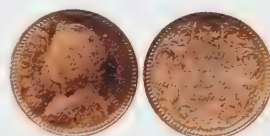


- 359 Silver Proof Restrike 2-Annas Mule 1877C, obverse A, *obv* VICTORIA QUEEN, reverse I (SW 652). *No hint of lacquering, uncirculated.* £400-600

This coin has the appearance of an early restrike with no rust marks on the neck, but it has three diamond die tests in the obverse field



- 360 Silver Proof Restrike 2-Annas, 1877C, obverse C, *obv* VICTORIA EMPRESS, appears not to have any hint of a mark on the lower part of the bust, reverse I. *Choice uncirculated and nicely toned.* £300-400



- 361 Silver Early Proof Restrike 2-Annas, 1878C, obverse B, *obv* VICTORIA EMPRESS, reverse II, no mintmark (SW 6.453a). *Toned, superb uncirculated.* £400-600



362



363

- 362 Silver Early Proof Restrike 2-Annas, 1882C, obverse C, *obv* VICTORIA EMPRESS, reverse II (SW 6.372). *Toned, choice uncirculated.* £500-800

ex Brand collection
ex Pridmore collection

- 363 Silver Early Proof Restrike 2-Annas, 1890C, obverse B, *obv* VICTORIA EMPRESS, reverse II (SW 6.400). *Superb uncirculated and attractively toned.* £500-800

The lower part of the bust is uneven as seen on some of the 1861 patterns and some of the restrikes



364



365

- 364 Silver Proof Restrike 2-Annas, 1890C, obverse B, *obv* VICTORIA EMPRESS, reverse II (SW 6.400). *Lacquered, choice uncirculated.* £350-450

With a full lower part to the bust line, indicating that the dies were repunched and parts of the design was added

- 365 Silver Original Proof 2-Annas, 1891C, obverse B, *obv* VICTORIA EMPRESS, reverse II (SW 6.407). *Nicely toned, choice uncirculated.* £500-800

ex J J Pittman collection

The look of the coin is that of an original proof, but the lower part of the bust appears to be more unfinished than even the 1890 in this auction. Perhaps that is the characteristic of original proofs as the mint did not finish the die.



- 366 Copper Early Proof Restrike 2-Annas, 1891C, obverse B, *obv* VICTORIA EMPRESS, reverse II (SW 6.407). *Superb uncirculated and attractively toned.* £500-800

Bust as the 1890C Proof Restrike (lot 364), unfinished in the centre at the lower part but more finished than the Original Proof (lot 365). For our next book, we hope to have the answer as to why this occurred. It looks like it has been with the 1890C above since striking, suggesting it might have been one of the few pieces made in the late 19th Century for either Murdoch or Montague, two of the prolific collectors of the 19th Century.



367



368



369

- 367 Silver Proof 2-Annas, 1881C, *obv* VICTORIA EMPRESS (SW 6.362). *In PCGS holder, graded PR63, lacquered with a little toning where the lacquer did not quite reach.* £350-450

- 368 Silver Restrike 2-Annas, 1882C, obverse 3, *obv* VICTORIA EMPRESS, with only a little of the lower part of the jabot visible, the rest has either worn away during the restriking or over time, but the bust goes right to the edge, reverse II (SW unlisted). *In PCGS holder, graded PR62.* £400-600

- 369 Copper Early Proof Restrike 2-Annas, 1892C, off-metal strike in copper, obverse B, *obv* VICTORIA EMPRESS, reverse II (SW 6.415). *Toned, choice uncirculated.* £400-600



- 370 Gold Proof Restrike 2-Annas, 1892C, off-metal strike in gold, obverse B, *obv* VICTORIA EMPRESS, reverse II (SW 6.416). *A few light contact marks, otherwise uncirculated.* £1000-1500



- 371 Silver Original Proof 2-Annas, 1893C, obverse B, *obv* VICTORIA EMPRESS, reverse II (SW 6.422). *Toned, some contact marks, otherwise uncirculated.* £400-600

We believe this is an original proof due to the width of the rim



- 372 Gold Proof Restrike 2-Annas, 1893C, off-metal strike in gold, obverse B, *obv* VICTORIA EMPRESS, reverse II (SW 6.423). *A few light marks only, very pleasant and uncirculated.* £1000-1500



373



374



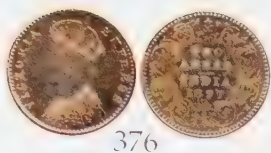
375

- 373 Silver Early Proof Restrike 2-Annas, 1894C, *obv* VICTORIA EMPRESS (SW 6.428). *Cleaned, otherwise uncirculated.* £250-350

The edge strongly suggests it is an early Proof Restrike

- 374 Silver Early Proof Restrike 2-Annas, 1895C, obverse B, *obv* VICTORIA EMPRESS, reverse II (SW 6.430a). *Toned, choice uncirculated.* £400-600

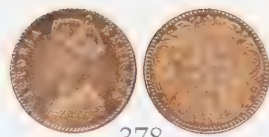
- 375 Silver Proof Restrike 2-Annas, 1896C, obverse B, *obv* VICTORIA EMPRESS, reverse II (SW 6.432). *Lightly toned, choice uncirculated.* £200-300



376



377



378

- 376 Silver Proof Restrike 2-Annas, 1897C, obverse C, *obv* VICTORIA EMPRESS, reverse II (SW 6.437a). *Some marks, but a pleasant tone, otherwise uncirculated.* £150-250

This bust is usually seen on the 1901 coinage, it is a fuller, older bust of Victoria

- 377 Silver Original Proof 2-Annas, 1897B, obverse B, *obv* VICTORIA EMPRESS, reverse II (SW 6.440) *Pleasing tone, choice uncirculated.* £400-600

An original proof or struck very shortly after

- 378 Silver Proof Restrike 2-Annas, 1898C, obverse B, *obv* VICTORIA EMPRESS, reverse II (SW 6.443). *Light marks, otherwise mostly brilliant, otherwise uncirculated.* £200-300



379



380

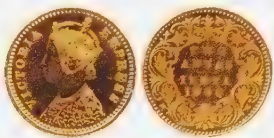


381

- 379 Silver Early Proof Restrike 2-Annas, 1898B, *obv* VICTORIA EMPRESS (SW 6.442). *Nicely toned, choice uncirculated.* £300-400

- 380 Silver Proof Restrike 2-Annas, 1899C, obverse B, *obv* VICTORIA EMPRESS, reverse II, proof only date (SW 6.445). *Toned over a few very light marks, otherwise uncirculated.* £500-700

- 381 Silver Proof Restrike 2-Annas, 1900Br, obverse A, *obv* VICTORIA EMPRESS, reverse I (SW 6.449a). *Lightly toned, choice uncirculated.* £200-300



- 382 Gold Early Proof Restrike 2-Annas, 1900Br, obverse A, *obv* VICTORIA EMPRESS, reverse I, probably an earlier strike from the modern series (SW 6.451a). *Choice uncirculated.* £1000-1500



383



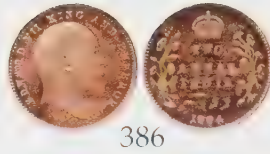
384

- 383 Silver Original Proof 2-Annas, 1901C, obverse B, *obv* VICTORIA EMPRESS, reverse II (SW 6.452a). *Attractively toned, die polishing lines evident under the tone, otherwise uncirculated.* £400-600

- 384 Silver Proof Restrike 2-Annas, 1901B, obverse C, *obv* VICTORIA EMPRESS, reverse I (SW 6.454a). *Lacquered, brilliant uncirculated.* £200-300



385



386



387

- 385 Silver Original Proof 2-Annas, 1903C, *obv* EDWARD VII KING AND EMPEROR (SW 7.98). *Superb with attractive tone that hides most of the die polishing lines, uncirculated.* £400-600

ex J J Pittman collection

- 386 Silver Proof Restrike 2-Annas, 1904C, *obv* EDWARD VII KING AND EMPEROR (SW 7.100). *Brilliant uncirculated, some tone where the lacquer is missing on the edge.* £150-250

ex J J Pittman collection

- 387 Silver Original Proof 2-Annas, 1904C, *obv* EDWARD VII KING AND EMPEROR (SW 7.100). *Moderately toned, hiding much of the die polishing lines, uncirculated.* £400-600

The original proof die polishing tends to be horizontal while the Proof Restrikes tends to be random. It is one of the characteristics we can use to "date" when the coin was struck.



- 388 Gold Proof Restrike 2-Annas, 1904C, *off-metal strike in gold, obv* EDWARD VII KING AND EMPEROR (SW 7.101). *A number of small handling marks, otherwise uncirculated.* £1000-1500

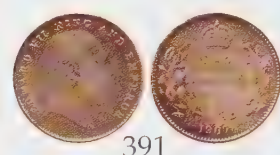
From the number of impaired gold restrikes seen, it would appear that these gold examples would be the pieces that a collector may be most proud of and the coins that he would want to show his non-numismatic friends, therefore the handling marks.



389



390



391

- 389 Silver Proof Restrike 2-Annas, 1905C, *obv* EDWARD VII KING AND EMPEROR (SW 7.103). *Brilliant uncirculated, light hairlines in the lacquer.* £150-250

- 390 Silver Proof Restrike 2-Annas, 1906C, *obv* EDWARD VII KING AND EMPEROR (SW 7.105). *Brilliant uncirculated, light hairlines in the lacquer.* £150-250

- 391 Silver Proof Restrike 2-Annas, 1907C, *obv* EDWARD VII KING AND EMPEROR (SW 7.108). *Lightly toned, some light handling marks, otherwise uncirculated.* £250-350



392



393

- 392 Silver Proof Restrike 2-Annas, 1908C, *obv* EDWARD VII KING AND EMPEROR (SW 7.110). *Brilliant uncirculated, light hairlines in the lacquer.* £250-350

- 393 Silver Original Proof 2-Annas, 1908C, *obv* EDWARD VII KING AND EMPEROR (SW 7.110). *Superb about uncirculated, toned, one small obverse edge mark.* £500-800



- 394 Silver Original(?) Proof 2-Annas, 1909C, *obv* EDWARD VII KING AND EMPEROR (SW7.112). *Toned, uncirculated.* £400-600

Probably an original proof, but the heavy tone makes it difficult to be certain



- 395 Silver Original Proof 2-Annas, 1909C, *obv* EDWARD VII KING AND EMPEROR (SW 7.112). *Moderately toned, the obverse is superb, a few light marks on the reverse, otherwise uncirculated.* £800-1200



- 396 Silver Proof Restrike 2-Annas, 1910C, *obv* EDWARD VII KING AND EMPEROR (SW 7.115). *Brilliant uncirculated, light hairlines in the lacquer.* £150-250



- 397 Gold Proof Restrike 2-Annas, 1910C, off-metal strike in gold, *obv* EDWARD VII KING AND EMPEROR (SW 7.115). *Numerous light handling marks, similar to the Gold Proof Restrike 2-Annas in lot 388, otherwise uncirculated.* £1000-1500



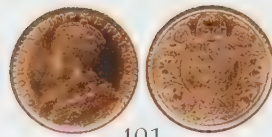
- 398 Silver Proof Restrike 2-Annas, 1911C, using the obverse of the 1912 2-Anna, *obv* GEORGE V KING EMPEROR (SW 8.195). *Lightly toned, uncirculated.* £400-600

Appears to be from the earliest striking of the "modern era"

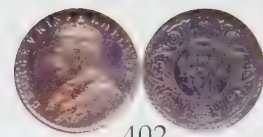
- 399 Silver Proof Restrike 2-Annas, 1912B, *obv* GEORGE V KING EMPEROR (SW 8.199). *Brilliant uncirculated.* £200-300



400



401



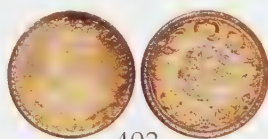
402

400 Silver Original Proof 2-Annas, 1913C, *obv* GEORGE V KING EMPEROR (SW 8.201). *Lightly toned, superb uncirculated.* £400-600

401 Silver Original Proof 2-Annas, 1913B, *obv* GEORGE V KING EMPEROR (SW 8.203). *Moderately toned, superb uncirculated with heavy frost on the bust and the devices.* £400-600

Original proofs of Bombay are quite different from those of the Calcutta mint. Even the originals that came out of the mint the year they were struck were more highly polished than the coins of Calcutta. The wide edge is the main indicator for these original proofs.

402 Silver 2-Annas, 1913C, *obv* GEORGE V KING EMPEROR (SW 8.201). *In NGC holder, graded PL65, attractively toned.* £200-300



403



404

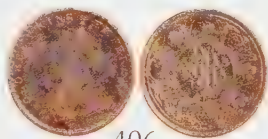


405

403 Silver Early Proof Restrike 2-Annas, 1914C, *obv* GEORGE V KING EMPEROR (SW 8.205). *Lightly toned, choice uncirculated.* £200-300

404 Silver Proof Restrike 2-Annas, 1914B, *obv* GEORGE V KING EMPEROR (SW 8.207). *Mottled tone, choice uncirculated.* £200-300

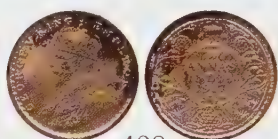
405 Silver Early Proof Restrike 2-Annas, 1915C, *obv* GEORGE V KING EMPEROR (SW 8.209). *Lightly toned, choice uncirculated.* £200-300



406



407



408

406 Silver Proof Restrike 2-Annas, 1916C, *obv* GEORGE V KING EMPEROR (SW 8.213). *Moderately toned, choice uncirculated.* £150-250

407 Silver Proof Restrike 2-Annas, 1917C, *obv* GEORGE V KING EMPEROR (SW 8.215a). *Attractively toned, uncirculated.* £150-250

With the blues of the Bombay mint envelopes, which tells us that by 1955 the Bombay mint had possession of the 1917 Calcutta dies

408 Silver Proof Restrike 2-Annas, 1917B, *obv* GEORGE V KING EMPEROR (SW unlisted). *Choice uncirculated with light peripheral tone.* £500-800

This coin has the dot mintmark of the Bombay mint, but Bombay was not supposed to have struck this coin! There has to be some explanation as to why this happened, however, the importance of this for the date collector is obvious.



409 Cupro-nickel Original Proof 2-Annas, 1918B, *obv* GEORGE V KING EMPEROR (SW 8.224). *Toned an attractive purple, uncirculated.* £500-800



410



411

- 410 Cupro-nickel Proof Restrike 2-Annas, 1918B, *obv* GEORGE V KING EMPEROR (SW 8.224). *Some light handling marks and toned at 9 o'clock where the lacquer was poorly applied, otherwise uncirculated.* £100-150

Reverse has what appears to be the results of a piece of lint or fibre caught in the process of striking

- 411 Cupro-nickel Proof Restrike 2-Annas, 1919C, *obv* GEORGE V KING EMPEROR (SW 8.226a). *Uneven tone due to uneven lacquering, the coin appears to be mark free though, uncirculated.* £200-300



412



413

- 412 Cupro-nickel Proof Restrike 2-Annas, 1920B, proof only mintmark, *obv* GEORGE V KING EMPEROR (SW 8.229a). *Choice uncirculated.* £300-400

- 413 Cupro-nickel Proof Restrike 2-Annas, 1921C, proof only date, *obv* GEORGE V KING EMPEROR (SW 8.230). *Uneven tone due to poor lacquering, mostly just on the obverse, uncirculated.* £500-800

While there is no dot to indicate a Bombay mint striking, the strong odds are that it was struck there



414



415

- 414 Cupro-nickel Proof Restrike 2-Annas, 1923C, *obv* GEORGE V KING EMPEROR (SW 8.223). *Lacquered, choice uncirculated.* £200-300

- 415 Cupro-nickel Proof Restrike 2-Annas, 1924B, *obv* GEORGE V KING EMPEROR (SW 8.239). *Lacquered, choice uncirculated.* £200-300



416



417

- 416 Cupro-nickel Proof Restrike 2-Annas, 1925C, *obv* GEORGE V KING EMPEROR (SW 8.241). *Attempted removal of some of the lacquer has left a little mottled toning, otherwise choice uncirculated.* £200-300

- 417 Cupro-nickel Proof Restrike 2-Annas, 1926C, *obv* GEORGE V KING EMPEROR (SW 8.245a). *Lacquered, choice uncirculated.* £200-300



418

419

418 Cupro-nickel Proof Restrike 2-Annas, 1926B, *obv* GEORGE V KING EMPEROR (SW 8.247a). *Lacquered for the most part, a small part of the edge was missed, otherwise choice uncirculated.* £200-300

Interesting coin in that the obverse has an obvious doubling in the strike

419 Cupro-nickel Proof Restrike 2-Annas, 1927B, *obv* GEORGE V KING EMPEROR (SW 8.251). *Lacquered, though a little of the obverse edge was missed by the lacquer where it has now toned, choice uncirculated.* £200-300



420

421

420 Cupro-nickel Proof Restrike 2-Annas, 1928B, *obv* GEORGE V KING EMPEROR (SW 9.255). *Lacquered, gem uncirculated.* £300-400

Most unusual to find Copper-nickel pieces this nice

421 Cupro-nickel Proof Restrike 2-Annas, 1929C, *obv* GEORGE V KING EMPEROR (SW 8.257). *Lacquered, superb uncirculated, almost as nice as the coin in the previous lot.* £250-350



422

423

422 Cupro-nickel Proof Restrike 2-Annas, 1930B, proof only mintmark, *obv* GEORGE V KING EMPEROR (SW 8.260). *Attempted removal of the lacquer has resulted in an uneven tone and some lacquer remaining, but no marks to speak of, otherwise uncirculated.* £250-350

423 Cupro-nickel Proof Restrike 2-Annas, 1933B, proof only mintmark, *obv* GEORGE V KING EMPEROR (SW 8.263). *Lacquered and choice uncirculated.* £250-350



424

425

424 Cupro-nickel Proof Restrike 2-Annas, 1934C, *obv* GEORGE V KING EMPEROR (SW 8.265a). *The lacquering a little uneven, otherwise choice uncirculated.* £200-300

425 Cupro-nickel Original Proof 2-Annas, 1935C, *obv* GEORGE V KING EMPEROR (SW 8.266a). *A few light marks, otherwise uncirculated.* £400-600

Distinctly different in look, especially the rim, compared to the other Copper-nickel 2-Annas in this auction.



426

427

426 Cupro-nickel Proof Restrike 2-Annas, 1935B, *obv* GEORGE V KING EMPEROR (SW 8.268). *The lacquer missing at 3 o'clock on the reverse, otherwise choice uncirculated.* £200-300

427 Cupro-nickel Proof Restrike 2-Annas, 1936B, *obv* GEORGE V KING EMPEROR (SW 8.270). *The lacquer missing at 3 o'clock on the obverse, some light handling marks, otherwise uncirculated.* £200-300

If a census was possible for all the restrikes known, we would find out just how rare these later dates are!



428

429

428 Cupro-nickel Original Proof 2-Annas, 1939B, *obverse 1, obv* GEORGE VI KING EMPEROR (SW 9.110a). *The toning is a little uneven with a few light marks, otherwise choice uncirculated.* £400-600

ex Spencer collection
ex Pridmore collection

429 Cupro-nickel Original Proof 2-Annas, 1939B, *obverse 2, obv* GEORGE VI KING EMPEROR (SW 9.112a). *A few very light marks, choice uncirculated.* £400-600

This coin has the wide rims and heavily frosted devices that we expect from original proofs. Even though the fields are highly reflective, as on Proof Restrikes, this was a characteristic of the Bombay mint for at least the previous 40 years.



430

431

430 Cupro-nickel Original Proof 2-Annas, 1939C, *obverse 2, obv* GEORGE VI KING EMPEROR (SW 9.108). *Choice uncirculated.* £400-600

Our findings seem to show that the wide rims of the George VI and many of the George V coins are the indicator of an original proof. It becomes very difficult during this period, when the restrikes were being struck, to differentiate between restrike and original. We are very fortunate to have this many coins from the Fore collection to compare and help us to form opinions.

431 Cupro-nickel Proof Restrike 2-Annas, 1940C, *obv* GEORGE VI KING EMPEROR (SW 9.115). *No lacquer, possibly having been removed long ago, a few marks but with the same "look" as the 1939C proof in the previous lot, otherwise uncirculated.* £120-180



432 Cupro-nickel Proof Restrike 2-Annas, 1941C, *obv* GEORGE VI KING EMPEROR (SW 9.119). *Lacquered, choice uncirculated.* £120-180



433



434

- 433 Cupro-nickel Proof Restrike 2-Annas, 1941B, *obv* GEORGE VI KING EMPEROR (SW 9.121). *Lacquered, choice uncirculated.* £150-250

ex Pridmore collection, with ticket.

This is *almost* the same edge as the 1939 original proofs, but not quite, it is a touch more polished, but the lack of the heavy frostiness of the 1939B indicates that it is a restrike, although done very early in the series.

- 434 Nickel-brass Original Proof 2-Annas, 1944L, *obv* GEORGE VI KING EMPEROR (SW 9.128). *A few light marks, but the beginning of some beautiful colours in the tone, uncirculated.* £400-600

ex J J Pittman collection



435



436

- 435 Nickel-brass Proof Restrike 2-Annas Mule, 1945B, *obverse 1, obv* GEORGE VI KING EMPEROR (SW 9.133). *Lacquered, choice uncirculated.* £120-180

- 436 Nickel-brass Proof Restrike 2-Annas, 1945B, *obverse 2, obv* GEORGE VI KING EMPEROR (SW 9.132). *Lacquered, choice uncirculated.* £120-180



437



438

- 437 Cupro-nickel Original Proof 2-Annas, 1946C, *obv* GEORGE VI KING EMPEROR (SW 9.137). *A touch of the die polishing visible, otherwise choice uncirculated.* £400-600

ex J J Pittman collection

- 438 Cupro-nickel Proof Restrike 2-Annas, 1946B, *obv* GEORGE VI KING EMPEROR (SW 9.137). *Lacquered, choice uncirculated.* £150-250



439



440

- 439 Cupro-nickel Original Proof 2-Annas, 1947C, *obv* GEORGE VI KING EMPEROR (SW 9.140). *Very light die polishing lines can be seen, otherwise superb uncirculated.* £400-600

- 440 Cupro-nickel Proof Restrike 2-Annas, 1947C, *obv* GEORGE VI KING EMPEROR (SW 9.140). *A few handling marks in the lacquer, otherwise uncirculated.* £120-180



441

442

441 Cupro-nickel Proof Restrike 2-Annas, 1947B, obverse 1, *obv* GEORGE VI KING EMPEROR (SW 9.142a). *Lacquered, choice uncirculated.* £120-180

442 Cupro-nickel Proof Restrike 2-Annas, 1947B, obverse 2, *obv* GEORGE VI KING EMPEROR (SW 9.142). *Lacquered, superb uncirculated.* £150-250



443 Silver Proof 1/4-Rupee, 1835B, original proof or very early restrike (within 10-20 years of the original), *obv* WILLIAM III KING, without initial on truncation, *rev* EAST INDIA COMPANY, dot after date, 18 berries, but with a single leaf to the cluster at the right hand loop of the bow (SW 1.73a; Pr 97). *Toned, uncirculated, but with a small flaw before the King's cheek.* £1000-1500

So the difference is with the leaf as compared to the new catalogue. The coin itself is, with a bit of unevenness in the metal which may be from die rust, indicating a slightly later strike. Still undoubtedly a 19th Century striking.



444 Silver Proof Restrike 1/4-Rupee, 1835C, *obv* WILLIAM III KING, F raised on truncation, *rev* EAST INDIA COMPANY, 18 berries and a single leaf, similar to the previous lot, but minor differences are apparent (SW 1.70). *Choice uncirculated.* £300-500



445 Silver Proof Restrike 1/4-Rupee Mule, 1840B, *obv* WILLIAM III KING, bust of William IV, raised F on truncation, *rev* EAST INDIA COMPANY, dated 1840, 10 berries and plain "4" in date, no dot after date (SW 1.71). *Lightly toned, very choice, uncirculated.* £600-800



446



447

- 446 Silver Proof Restrike 1/4-Rupee, 1840C, obverse I, *obv* VICTORIA QUEEN, no initial on truncation, "English" head, plain second band in the Queen's hair, *rev* EAST INDIA COMPANY, 20 Berries and a hint of a crescent on the bow (SW 2.42a). *Toned, very choice, uncirculated.* £300-500
- 447 Silver Proof Restrike 1/4-Rupee, 1840C, obverse I, *obv* VICTORIA QUEEN, no initial on truncation, "Indian" head, second band in Queen's hair has a cross hatch, the first band has one small lock of her hair over the band, *rev* EAST INDIA COMPANY, 34 berries, with crescent (SW 2.44). *Lacquered, uncirculated.* £300-400



- 448 Silver Original Proof 1/4-Rupee, 1840, obverse II, *obv* VICTORIA QUEEN, *rev* EAST INDIA COMPANY, 10 berries, no crescent (SW 3.53). *Toned, superb uncirculated.* £600-800
ex J J Pittman collection



- 449 Silver Proof Restrike 1/4-Rupee, 1840, obverse II, *obv* VICTORIA QUEEN, *rev* EAST INDIA COMPANY, 10 berries, no crescent (SW 3.53). *Brilliant, choice uncirculated.* £200-300



- 450 Silver Original Proof 1/4-Rupee, 1840, obverse II, *obv* VICTORIA QUEEN, *rev* EAST INDIA COMPANY, 34 berries, crescent on bow (SW 3.56). *Toned, a few underlying light marks, choice uncirculated.* £1000-1500
ex J J Pittman collection
Technically this is a mule with the reverse of the previous type.



451



452



453

- 451 Silver Early Proof Restrike 1/4-Rupee, 1862C, *obv* VICTORIA QUEEN, reverse I (SW 4.129). *Has been lightly cleaned on the obverse, now retoning back, about uncirculated.* £300-500

Die rust and the general appearance gives the effect of an early 20th Century strike

- 452 Silver Original Proof 1/4-Rupee, 1862C, *obv* VICTORIA QUEEN, reverse II (SW 4.131). *Lightly toned, superb uncirculated.* £500-800

- 453 Silver Proof Restrike 1/4-Rupee Mule, 1862B, *obv* VICTORIA QUEEN, mature bust (SW 4.135). *Lightly toned, choice uncirculated.* £200-300

This is a late restrike from the dies that were used on the gold 5-Rupees, only known as a late restrike



454



455



456

- 454 Silver Original Proof 1/4-Rupee, 1875C, *obv* VICTORIA QUEEN (SW 5.32a). *Light even grey tone over virtually mark free surfaces, otherwise uncirculated.* £500-800

- 455 Silver Early Proof Restrike 1/4-Rupee, 1877C, struck in the first half of the 20th Century, *obv* VICTORIA EMPRESS (SW 6.252). *Lightly toned, superb uncirculated.* £300-500

- 456 Silver Early Proof Restrike 1/4-Rupee, 1878C, no mintmark, *obv* VICTORIA EMPRESS, *rev* short "7" in date which is the characteristic of a Calcutta die (SW 6.254). *Light grey tone, free of any marks, uncirculated.* £300-500

struck before the coin in the previous lot, with a raised wire rim and clean, ie unruled dies



457



458



459

- 457 Silver Early Proof Restrike 1/4-Rupee, 1878C, *obv* VICTORIA EMPRESS (SW 6.254). *Grey tone, a few light spots but basically free of any marks, uncirculated.* £250-350

Struck very early in the modern restrike era, without any extra polishing of the die and lacquering that took place. Comparing the two 1878s one can see die deterioration in the restrike helping to date it.

- 458 Silver Restrike 1/4-Rupee, 1881C, *obv* VICTORIA EMPRESS (SW 6.259). *In PCGS holder, graded PR64.* £250-350

- 459 Silver Early Proof Restrike 1/4-Rupee, 1882C, *obv* VICTORIA EMPRESS (SW 6.265). *Lightly toned, superb with a wonderful deep proof-like surface, uncirculated.* £300-500



460



461



462

- 460 Silver Early Proof Restrike ¼-Rupee, 1887B, *obv* VICTORIA EMPRESS (SW 6.289). *About uncirculated.* £300-500

If this was a Calcutta issue there would be no doubt about calling this an original proof because the surfaces are very much like those that Calcutta produced in contrast to the "shinier" Bombay issues. This has very little of the brilliance of a proof but it has the surface cleanliness of a proof; there are a few light hairlines in the field but the portrait is perfect with no hint of die rust and the rims are flat and not polished. This is part of the enigma of Indian coins which helps to date them.

- 461 Silver Original Proof ¼-Rupee, 1890C, *obv* VICTORIA EMPRESS (SW 6.298). *Nicely toned, superb surfaces, uncirculated.* £400-600

ex J J Pittman collection

- 462 Silver Proof Restrike ¼-Rupee, 1890C, *obv* VICTORIA EMPRESS, full lower bodice on Queen's dress (SW 6.298). *Dull grey tone, not lacquered and only a few light hairlines, otherwise uncirculated.* £250-350



463



464



465

- 463 Silver Proof Restrike ¼-Rupee, 1890C, a slightly later strike than the coin in the previous lot, the lower part of the Queen's dress has been polished off, *obv* VICTORIA EMPRESS (SW 6.298). *Light hairlines in the lacquer, otherwise brilliant uncirculated.* £250-350

- 464 Silver Original Proof ¼-Rupee 1891B, no mintmark, *obv* VICTORIA EMPRESS, *rev* the first "1" in the date is double punched while the last "1" is too low (SW 6.305). *Nicely toned, superb surfaces, uncirculated.* £400-600

ex J J Pittman collection

It has the appearance of a Calcutta mint striking

- 465 Silver Proof Restrike ¼-Rupee, 1891C, *obv* VICTORIA EMPRESS (SW 6.302). *Light hairlines in the lacquer, brilliant uncirculated.* £250-350



- 466 Gold Proof Restrike ¼-Rupee, 1892B, off-metal strike in gold, *obv* VICTORIA EMPRESS (SW 6.313). *Very light hairlines, otherwise uncirculated.* £2000-3000

This coin has the appearance of an early strike and fits in with those from the era of coins that Murdoch and Montague had struck for their collections



- 467 Silver Early Proof Restrike 1/4-Rupee, 1893C, *obv* VICTORIA EMPRESS (SW 6.317). *Toned, choice uncirculated.* £350-550

ex J J Pittman collection



- 468 Gold Proof Restrike 1/4-Rupee, 1893C, off-metal strike in gold, *obv* VICTORIA EMPRESS (SW unlisted). *Choice uncirculated.* £1500-2000



469



470



471

- 469 Silver Early Proof Restrike 1/4-Rupee, 1894C, *obv* VICTORIA EMPRESS (SW 6.321). *Toned, choice uncirculated.* £350-550

- 470 Silver Proof Restrike 1/4-Rupee, 1894B, *obv* VICTORIA EMPRESS (SW 6.323). *Toned, choice uncirculated.* £250-350

- 471 Silver Proof Restrike 1/4-Rupee, 1896C, *obv* VICTORIA EMPRESS (SW 6.325). *Moderately toned, choice uncirculated.* £250-350



472



473



474

- 472 Silver Original Proof 1/4-Rupee, 1896C, *obv* VICTORIA EMPRESS (SW 6.325). *Darkly toned, a few spots, otherwise uncirculated.* £400-600

- 473 Silver Proof Restrike 1/4-Rupee, 1897C, *obv* VICTORIA EMPRESS (SW 6.328). *Toned, a few hairlines, otherwise uncirculated.* £250-350

- 474 Silver Original Proof 1/4-Rupee, 1897B, *obv* VICTORIA EMPRESS (SW 6.330). *Toned, choice uncirculated.* £450-650



- 475 Silver Early Proof Restrike 1/4-Rupee, 1898C, *obv* VICTORIA EMPRESS (SW 6.333). *Moderately toned, choice uncirculated.* £350-450
- 476 Silver Original Proof 1/4-Rupee, 1898B, *obv* VICTORIA EMPRESS (SW 6.337). *Darkly toned, choice uncirculated.* £400-600

ex J J Pittman collection



- 477 Gold Proof Restrike 1/4-Rupee, 1898B, off-metal strike in gold, *obv* VICTORIA EMPRESS (SW 6.338). *Superb uncirculated.* £1500-2000



- 478 Silver Proof Restrike 1/4-Rupee, 1899C, proof only date, *obv* VICTORIA EMPRESS (SW 6.339). *Choice uncirculated.* £400-600
- 479 Silver Proof Restrike 1/4-Rupee, 1900C, *obv* VICTORIA EMPRESS (SW 6.341). *Moderately toned, a few light marks under the tone, otherwise uncirculated.* £200-300



- 480 Silver Original Proof 1/4-Rupee, 1901C, *obv* VICTORIA EMPRESS (SW 6.345). *Nicely toned, a few light hairlines, otherwise uncirculated.* £450-650
- 481 Silver Proof Restrike 1/4-Rupee, 1901C, *obv* VICTORIA EMPRESS (SW 6.345). *Toned, light hairlines, otherwise uncirculated.* £200-300



- 482 Silver Original Proof 1/4-Rupee, 1903C, *obv* EDWARD VII KING AND EMPEROR (SW 7.79). *Satin finish, beautifully toned, superb uncirculated.* £500-800



483



484



485

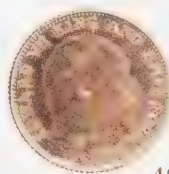
- 483 Silver Proof Restrike 1/4-Rupee, 1904C, *obv* EDWARD VII KING AND EMPEROR (SW 7.81). *Darkly toned with one spot, otherwise uncirculated.* £200-300

- 484 Silver Proof Restrike 1/4-Rupee, 1905C, *obv* EDWARD VII KING AND EMPEROR (SW 7.83). *Lacquered, light hairlines, otherwise brilliant uncirculated.* £200-300

- 485 Silver Proof Restrike 1/4-Rupee, 1906C, *obv* EDWARD VII KING AND EMPEROR (SW 7.85). *Lacquered, light hairlines, otherwise brilliant uncirculated.* £200-300



486



487



488

- 486 Silver Proof Restrike 1/4-Rupee, 1907C, *obv* EDWARD VII KING AND EMPEROR (SW 7.87). *Lacquered, light hairlines, otherwise brilliant uncirculated.* £200-300

- 487 Silver Proof Restrike 1/4-Rupee, 1908C, *obv* EDWARD VII KING AND EMPEROR (SW 7.89). *Lacquered, light hairlines, otherwise brilliant uncirculated.* £200-300

- 488 Silver Original Proof 1/4-Rupee, 1908C, *obv* EDWARD VII KING AND EMPEROR (SW 7.89). *Moderately toned, choice uncirculated.* £500-800

a bit 'deeper' proof surface than the satin finish of the 1903 in this sale (lot 482)



489



490

- 489 Silver Proof Restrike 1/4-Rupee, 1909C, *proof only date, obv* EDWARD VII KING AND EMPEROR (SW 7.90). *Lightly toned and a few hairlines, some scratches under the "E" of "RUPEE" on the reverse, good extremely fine.* £400-600

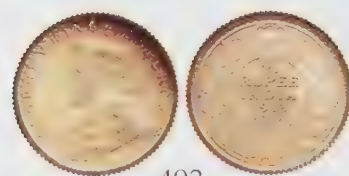
- 490 Silver Proof Restrike 1/4-Rupee, 1910C, *obv* EDWARD VII KING AND EMPEROR (SW 7.92). *Unusually nice for one of these, nicely toned, otherwise uncirculated.* £250-350



491



492



493

491 Silver Proof Restrike 1/4-Rupee, 1910B(?), *obv* EDWARD VII KING AND EMPEROR, *rev* with the dot on the vine as the Bombay issues, but no hint of a B mintmark in the crown (SW 7.92). *Lacquered, with hairlines, otherwise brilliant uncirculated.* £250-350

492 Silver Original Proof 1/4-Rupee, 1912C, *obv* GEORGE V KING EMPEROR (SW 8.139). *Toned, choice uncirculated.* £400-600

493 Silver Early Proof Restrike 1/4-Rupee, 1913C, *obv* GEORGE V KING EMPEROR (SW 8.143). *Moderately toned, choice uncirculated, with a satin finish that is more usually found on coins produced in the Edward VII period than those of George V.* £300-500



494



495

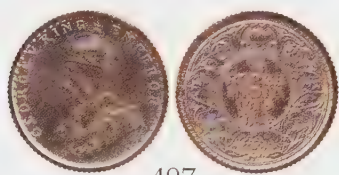


496

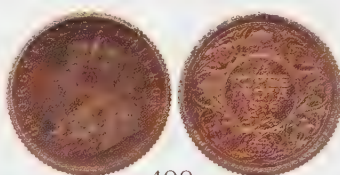
494 Silver Original Proof 1/4-Rupee, 1913B, *obv* GEORGE V KING EMPEROR (SW 8.145). *Nicely toned, choice uncirculated.* £400-600

495 Silver Early Proof Restrike 1/4-Rupee, 1914C, *obv* GEORGE V KING EMPEROR (SW 8.147). *Brilliant about uncirculated, a few very light marks in the field.* £300-500

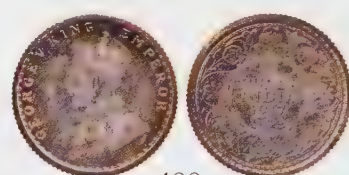
496 Silver Proof Restrike 1/4-Rupee, 1914C, *obv* GEORGE V KING EMPEROR (SW 8.147). *Brilliant, choice uncirculated.* £250-350



497



498



499

497 Silver Proof Restrike 1/4-Rupee, 1915C, *obv* GEORGE V KING EMPEROR (SW 8.151). *Brilliant, choice uncirculated.* £250-350

498 Silver Proof Restrike 1/4-Rupee, 1916C, *obv* GEORGE V KING EMPEROR (SW 8.155). *Pleasantly toned, light hairlines, uncirculated.* £250-350

499 Silver Proof Restrike 1/4-Rupee, 1917C, *obv* GEORGE V KING EMPEROR (SW 8.157). *Very nicely toned, light hairlines beneath the tone, uncirculated.* £250-350



500



501

500 Cupro-nickel Proof Restrike 4-Annas, 1919C, *obv* GEORGE V KING EMPEROR (SW 8.183). *Lacquered, brilliant uncirculated.* £250-350

501 Cupro-nickel Proof Restrike 4-Annas, 1919B, *obv* GEORGE V KING EMPEROR (SW 8.185). *Lacquered, brilliant uncirculated.* £250-350



502



503

502 Cupro-nickel Original Proof 4-Annas, 1920C, *obv* GEORGE V KING EMPEROR (SW 8.187). *Superb uncirculated.* £600-800

503 Cupro-nickel Proof Restrike 4-Annas, 1920C, *obv* GEORGE V KING EMPEROR (SW 8.187). *Lacquered, brilliant uncirculated.* £250-350



504



505



506

504 Cupro-nickel Proof Restrike 4-Annas, 1920B, *obv* GEORGE V KING EMPEROR (SW 8.189). *Lacquered, brilliant uncirculated.* £250-350

505 Cupro-nickel Proof Restrike 4-Annas, 1921C, *obv* GEORGE V KING EMPEROR (SW 8.190). *Lacquered, brilliant uncirculated.* £350-500

506 Cupro-nickel Proof Restrike 4-Annas, 1921B, *obv* GEORGE V KING EMPEROR (SW 8.192). *Lacquered, brilliant uncirculated.* £350-500



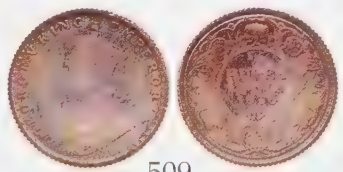
507



508

507 Silver Proof Restrike 1/4-Rupee, 1925B, *obv* GEORGE V KING EMPEROR (SW 8.163). *Lightly toned, light hairlines, otherwise uncirculated.* £250-350

508 Silver Proof Restrike 1/4-Rupee, 1928B, *obv* GEORGE V KING EMPEROR (SW 8.167). *Pleasantly toned, choice uncirculated.* £250-350



509



510

509 Silver Proof Restrike 1/4-Rupee, 1936B, *obv* GEORGE V KING EMPEROR (SW 8.179). *Nicely toned, a few marks, about uncirculated.* £250-350

510 Silver Proof Restrike 1/4-Rupee, 1938C, *obverse 1, obv* GEORGE VI KING EMPEROR (SW 9.75). *Lacquered, though hairlined, otherwise brilliant uncirculated.* £250-350



- 511 Silver Proof Restrike 1/4-Rupee, 1938C, obverse 2, *obv* GEORGE VI KING EMPEROR (SW 9.76). *Lacquered with minimum hairlines, brilliant uncirculated.* £500-800



- 512 Silver Original Proof 1/4-Rupee, 1943L, *obv* GEORGE VI KING EMPEROR (SW unlisted). *Toned, choice uncirculated.* £500-800
- 513 Silver Original Proof 1/4-Rupee, 1944L, *obv* GEORGE VI KING EMPEROR (SW 9.95). *Moderately toned, a few very small marks, otherwise uncirculated.* £500-800

ex J J Pittman collection



- 514 Silver Proof Restrike 1/4-Rupee, 1945B, *obv* GEORGE VI KING EMPEROR, *rev* large "5" in date (SW 9.470a). *Lacquered, a few light marks, otherwise brilliant uncirculated.* £500-800
- 515 Silver Original Proof 1/4-Rupee, 1945L, *obv* GEORGE VI KING EMPEROR (SW 9.99). *Brilliant, choice uncirculated.* £500-800

ex J J Pittman collection

No real frostiness to the bust which is characteristic of the Lahore mint

- 516 Silver Proof Restrike 1/4-Rupee, 1947B, *obv* GEORGE VI KING EMPEROR (SW 9.104). *Lacquered, with a touch of cloudiness in the lacquer, otherwise uncirculated.* £200-300



- 517 Silver Original Proof 1/2 Rupee, 1835C, *obv* WILLIAM III KING, *rev* EAST INDIA COMPANY (SW 1.59). *Pleasantly toned, choice uncirculated.* £1000-1500



518



519

518 Silver Proof Restrike ½-Rupee, 1835C, *obv* WILLIAM III KING, *rev* EAST INDIA COMPANY (SW 1.59). *Pleasantly toned, choice uncirculated.* £400-600

519 Silver Proof Restrike ½-Rupee Mule, 1840, *obv* WILLIAM III KING, portrait of William IV, dated 1840, *rev* EAST INDIA COMPANY, 19 berries (SW unlisted). *Brilliant, choice uncirculated.* £800-1200



520 Silver Original Proof ½-Rupee, 1840C, obverse I, *obv* VICTORIA QUEEN, *rev* EAST INDIA COMPANY (SW 2.36). *Nicely toned, superb uncirculated.* £1000-1500



521 Silver Proof Restrike ½-Rupee, 1840C, obverse I, *obv* VICTORIA QUEEN, *rev* EAST INDIA COMPANY (SW 2.33). *Moderately toned, choice uncirculated.* £400-600



522 Silver Original Proof ½-Rupee, 1840, obverse II, *obv* VICTORIA QUEEN, *rev* EAST INDIA COMPANY, as the 1849 coinage (SW 3.48). *Moderately toned, choice uncirculated.* £1000-1500



- 523 Silver Proof Restrike ½-Rupee, 1840, obverse II, *obv* VICTORIA QUEEN, *rev* EAST INDIA COMPANY, 11 berries left, 12 right, no dot after date, correct spelling of Persian legend (SW unlisted). *Lacquered, minor hairlines, brilliant uncirculated.* £500-800



- 524 Silver Original Proof ½-Rupee, 1862C, obverse I, *obv* VICTORIA QUEEN, *rev* flat topped "1" in date (SW 4.118). *Toned, superb uncirculated.* £600-800



- 525 Silver Original Proof ½-Rupee, 1862C, obverse I, *obv* VICTORIA QUEEN, *rev* flat topped "1" in date (SW 4.120). *Toned, superb uncirculated.* £600-800

- 526 Silver Proof Restrike ½-Rupee, 1862C, *obv* VICTORIA QUEEN (SW 4.118). *Brilliant, superb uncirculated.* £400-600



- 527 Silver Proof Restrike ½-Rupee, 1862, *obv* VICTORIA QUEEN (SW 4.124). *Brilliant about uncirculated, light hairlines.* £300-500

- 528 Silver Original Proof ½-Rupee, 1875C, *obv* VICTORIA QUEEN (SW 5.26). *Moderately toned, choice uncirculated.* £500-800



- 529 Silver Early Proof Restrike ½-Rupee, 1877C, *obv* VICTORIA EMPRESS (SW 6.170). *Toned, a number of hairlines beneath the tone, otherwise uncirculated.* £400-600

- 530 Silver Proof Restrike ½-Rupee, 1877B, *obv* VICTORIA EMPRESS (SW 6.173). *Brilliant, choice uncirculated.* £400-600



531



532

- 531 Silver Early Proof Restrike ½-Rupee, 1878C, *obv* VICTORIA EMPRESS (SW 6.175). *Toned, light hairlines, otherwise uncirculated.* £400-600
- 532 Silver Original Proof ½-Rupee, 1878C, *obv* VICTORIA EMPRESS (SW 6.175). *Brilliant, superb uncirculated.* £800-1000



- 533 Silver Early Proof Restrike ½-Rupee, 1882C, *obv* VICTORIA EMPRESS (SW 6.185). *Beautifully toned, superb uncirculated.* £800-1000



- 534 Silver Proof Restrike ½-Rupee, 1890C, *proof only date, obv* VICTORIA EMPRESS (SW 6.205). *Lightly toned, light hairlines, uncirculated.* £800-1000



535



536

- 535 Silver Early Proof Restrike ½-Rupee, 1891C, *date not struck for circulation, obv* VICTORIA EMPRESS (SW 6.206). *The lacquering a little uneven, otherwise choice uncirculated.* £800-1000
- 536 Silver Original Proof ½-Rupee, 1891C, *obv* VICTORIA EMPRESS (SW 6.206). *Darkly toned, choice uncirculated.* £800-1000



537



538

- 537 Silver Early Proof Restrike ½-Rupee, 1892C, *obv* VICTORIA EMPRESS (SW 6.212). *Nicely toned, choice uncirculated.* £800-1000

ex J J Pittman collection

- 538 Silver Early Proof Restrike ½-Rupee, 1893C, *obv* VICTORIA EMPRESS (SW 6.219). *Moderately toned, a few marks and one edge knock, otherwise uncirculated.* £300-500



539



540

- 539 Silver Original Proof ½-Rupee, 1894C, *obv* VICTORIA EMPRESS (SW 6.222). *Toned, a few light spots, otherwise uncirculated.* £800-1000

- 540 Silver Original Proof ½-Rupee, 1896C, *obv* VICTORIA EMPRESS (SW 6.225). *Nicely toned, superb uncirculated.* £800-1000



541



542

- 541 Silver Original Proof ½-Rupee, 1897C, *obv* VICTORIA EMPRESS (SW 6.229). *Darkly toned, choice uncirculated.* £800-1000

- 542 Silver Early Proof Restrike ½-Rupee, 1897B, hint of 7/6 in date, *obv* VICTORIA EMPRESS (SW 6.232). *Lightly toned, choice uncirculated.* £500-800



543



544



545

- 543 Silver Original Proof ½-Rupee, 1897B, *obv* VICTORIA EMPRESS (SW 6.232). *Darkly toned, a few small marks, otherwise uncirculated.* £500-800

- 544 Silver Original Proof ½-Rupee, 1898B, 8/7 in date, *obv* VICTORIA EMPRESS (SW 6.238). *Moderately toned, choice uncirculated.* £600-800

- 545 Silver Proof Restrike ½-Rupee, 1899C, *obv* VICTORIA EMPRESS (SW 6.241). *The lacquer very uneven on the obverse, uncirculated.* £300-500



546 Gold Proof Restrike ½-Rupee, 1899B, off-metal strike in gold, *obv* VICTORIA EMPRESS (SW 6.244). *Choice uncirculated.* £1500-2000



547 Silver Proof Restrike ½-Rupee, 1900C, proof only date, *obv* VICTORIA EMPRESS (SW 6.245). *Lacquered, brilliant uncirculated.* £800-1000



548 Silver Original Proof ½-Rupee, 1904C, proof only date, *obv* EDWARD VII KING AND EMPEROR (SW 7.55). *Toned, choice uncirculated.* £800-1000



549

549 Silver Proof Restrike ½-Rupee, 1904C, proof only date, *obv* EDWARD VII KING AND EMPEROR (SW 7.55). *Moderately toned, choice uncirculated.* £500-800



550

550 Silver Original Proof ½-Rupee, 1905C, *obv* EDWARD VII KING AND EMPEROR (SW 7.57). *Toned, superb uncirculated.* £500-800



551

- 551 Silver Proof Restrike 1/2-Rupee, 1905C, *obv* EDWARD VII KING AND EMPEROR (SW 7.57). *Lacquered, light hairlines, otherwise brilliant uncirculated.* £300-500



552

- 552 Silver Proof Restrike 1/2-Rupee, 1906C, *obv* EDWARD VII KING AND EMPEROR (SW 7.59). *Toned, choice uncirculated.* £300-500



553

- 553 Silver Proof Restrike 1/2-Rupee, 1907C, *obv* EDWARD VII KING AND EMPEROR (SW 7.63). *Lacquered, very light hairlines, brilliant uncirculated.* £300-500



554

- 554 Silver Original Proof 1/2-Rupee, 1908C, *obv* EDWARD VII KING AND EMPEROR (SW 7.67). *Toned, superb uncirculated.* £800-1000



555

- 555 Silver Proof Restrike 1/2-Rupee, 1908C, *obv* EDWARD VII KING AND EMPEROR (SW 7.67). *Lacquered, brilliant uncirculated.* £300-500



556

- 556 Silver Original Proof 1/2-Rupee, 1909B, *obv* EDWARD VII KING AND EMPEROR (SW 7.69). *Moderately toned, superb uncirculated.* £1000-1500



557

- 557 Silver Proof Restrike 1/2-Rupee, 1909B, *obv* EDWARD VII KING AND EMPEROR (SW 7.69). *Lacquered, light hairlines, otherwise brilliant uncirculated.* £500-800



558

- 558 Silver Proof Restrike 1/2-Rupee, 1910C, *obv* EDWARD VII KING AND EMPEROR (SW 7.71). *Lacquered and hairlined, brilliant uncirculated.* £400-600



559

- 559 Silver Proof Restrike 1/2-Rupee, 1910B, only a hint of both mintmarks, but they are there, *obv* EDWARD VII KING AND EMPEROR (SW 7.73). *Lacquered, brilliant uncirculated.* £500-800



- 560 Silver Proof Restrike ½-Rupee, 1911C, *obv* GEORGE V KING EMPEROR (SW 8.62). *Lacquered, a touch of light tone, brilliant uncirculated.* £1500-2000



561

562

- 561 Silver Original Proof ½-Rupee, 1912C, *obv* GEORGE V KING EMPEROR (SW 8.64). *Toned, choice uncirculated.* £400-600

- 562 Silver Original Proof ½-Rupee, 1913C, *obv* GEORGE V KING EMPEROR (SW 8.68). *Lightly toned, choice uncirculated.* £400-600



563

564

- 563 Silver Early Proof Restrike ½-Rupee, 1913B, *obv* GEORGE V KING EMPEROR (SW 8.70). *Toned, choice uncirculated.* £300-400

- 564 Silver Early Proof Restrike ½-Rupee, 1914C, *obv* GEORGE V KING EMPEROR (SW 8.72). *Brilliant, choice uncirculated.* £350-450



565

566

- 565 Silver Proof Restrike ½-Rupee, 1914B, *obv* GEORGE V KING EMPEROR (SW 8.74). *Cloudy tone on the obverse, otherwise uncirculated.* £250-350

- 566 Silver Proof Restrike ½-Rupee, 1915C, *obv* GEORGE V KING EMPEROR (SW 8.76). *Lightly toned and very lightly hairlined, still very attractive, otherwise uncirculated.* £300-400



- 567 Silver Proof Restrike 1/2-Rupee, 1916B, *obv* GEORGE V KING EMPEROR (SW 8.51). *Toned, choice uncirculated.* £300-400



568

569

- 568 Silver Proof Restrike 1/2-Rupee, 1917B, *obv* GEORGE V KING EMPEROR (SW 8.83). *Toned, choice uncirculated.* £300-400

- 569 Silver Proof Restrike 1/2-Rupee, 1918B, *obv* GEORGE V KING EMPEROR (SW 8.87). *Lightly toned, choice uncirculated, but a touch of cloudiness on the obverse.* £300-400



- 570 Gold Proof Restrike 1/2-Rupee, 1918C, *off-metal strike in gold, obv* GEORGE V KING EMPEROR (SW 8.85). *Choice uncirculated.* £2500-3500



- 571 Silver Proof Restrike 1/2-Rupee, 1919B, *obv* GEORGE V KING EMPEROR (SW 8.89). *Lacquered, brilliant uncirculated.* £300-400



572 Gold Proof Restrike 8-Annas, 1919C, off-metal strike in gold, *obv* GEORGE V KING EMPEROR (SW 8.130). *A few light marks, choice uncirculated.* £2500-3500



573 Cupro-nickel Proof Restrike 8-Annas, 1919B, *obv* GEORGE V KING EMPEROR (SW 8.132). *Lacquered, brilliant uncirculated.* £300-400



574 Cupro-nickel Proof Restrike 8-Annas, 1920C, proof only date, *obv* GEORGE V KING EMPEROR (SW 8.133). *The lacquer has been removed which makes the coin look rather different to what we are used to, uncirculated.* £400-600

ex Pridmore collection, with ticket



575 Cupro-nickel Original Proof 8-Annas, 1920B, *obv* GEORGE V KING EMPEROR (SW 8.135). *Lightly toned, choice uncirculated.* £1000-1500



576



577

- 576 Cupro-nickel Proof Restrike 8-Annas, 1920B, *obv* GEORGE V KING EMPEROR (SW 8.135). *Lacquered, brilliant uncirculated.* £400-600
- 577 Silver Proof Restrike ½-Rupee, 1921C, *obv* GEORGE V KING EMPEROR (SW 8.91). *Lacquer removed, now dull, otherwise about uncirculated.* £200-400



578



579

- 578 Silver Proof Restrike ½-Rupee, 1923B, *obv* GEORGE V KING EMPEROR (SW 8.100). *Lacquered, brilliant uncirculated.* £300-400
- 579 Silver Proof Restrike ½-Rupee, 1924B, *obv* GEORGE V KING EMPEROR (SW 8.104). *Lacquered, brilliant uncirculated.* £300-400



580



581

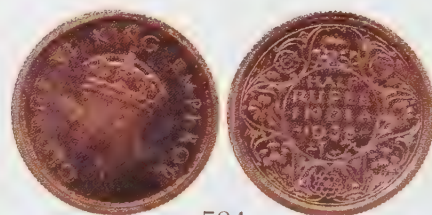


582

- 580 Silver Proof Restrike ½-Rupee, 1925B, *obv* GEORGE V KING EMPEROR (SW 8.108). *Lacquered, brilliant uncirculated.* £300-400
- 581 Silver Proof Restrike ½-Rupee, 1926B, *obv* GEORGE V KING EMPEROR (SW 8.112). *Dull, a few light marks, otherwise uncirculated.* £200-300
- 582 Silver Proof Restrike ½-Rupee, 1928B, *obv* GEORGE V KING EMPEROR (SW 8.116). *Nicely toned, choice uncirculated.* £350-550



583



584

- 583 Silver Proof Restrike ½-Rupee, 1936B, *obv* GEORGE V KING EMPEROR (SW 8.127). *Nicely toned, choice uncirculated.* £350-550
- 584 Silver Original Proof ½-Rupee, 1938C, *obverse 1, obv* GEORGE VI KING EMPEROR (SW 9.41). *Toned, choice uncirculated.* £400-600



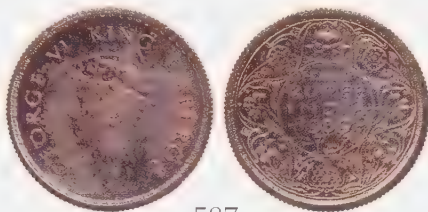
585

- 585 Silver Proof Restrike ½-Rupee, 1938C, obverse 1, *obv* GEORGE VI KING EMPEROR (SW 9.41). *Cloudy with numerous marks, about uncirculated.* £150-200



586

- 586 Silver Early Proof Restrike ½-Rupee, 1938B, obverse 2, *obv* GEORGE VI KING EMPEROR (SW 9.42). *Moderately toned, choice uncirculated.* £800-1200



587

- 587 Silver Proof Restrike ½-Rupee, 1938B, obverse I, *obv* GEORGE VI KING EMPEROR (SW 9.42). *Moderately toned, choice uncirculated.* £250-400



588

- 588 Silver Original Proof ½-Rupee, 1939B, *obv* GEORGE VI KING EMPEROR (SW 9.45). *Darkly toned, choice uncirculated.* £1000-1500

ex Spencer collection
ex Pridmore collection, with ticket



589

- 589 Silver Original Proof ½-Rupee, 1944L, *obv* GEORGE VI KING EMPEROR (SW 9.65). *Attractively toned, superb uncirculated.* £500-800

ex J J Pittman collection



590

- 590 Silver Original Proof ½-Rupee, 1945L, *obv* GEORGE VI KING EMPEROR (SW 9.69). *Attractively toned, superb uncirculated.* £500-800

ex J J Pittman collection



591

- 591 Silver Proof Restrike ½-Rupee, 1945B, *obv* GEORGE VI KING EMPEROR (SW 9.67). *Lacquered, brilliant uncirculated.* £200-300



592

- 592 Silver Proof Restrike ½-Rupee, 1947B, *obv* GEORGE VI KING EMPEROR (SW 9.74). *Lacquered, brilliant uncirculated.* £200-300



593 Silver Original Proof Rupee, 1835B, coin die axis, *obv* WILLIAM III KING, the letters are slightly smaller than the other original proofs in this auction, no initial on truncation, *rev* EAST INDIA COMPANY (SW 1.49). *Choice uncirculated.* £1500-2000



594 Silver Early Proof Restrike Rupee, 1835C, *obv* WILLIAM III KING, *rev* EAST INDIA COMPANY (SW 1.43). *Toned, superb uncirculated.* £1000-1500

Looks like an original proof, but a bit of die rust would suggest it was struck somewhat later than 1835. I am sure it is a 19th Century production.



595 Silver Proof Restrike Rupee, 1835C, *obv* WILLIAM III KING, *rev* EAST INDIA COMPANY (SW 1.83). *Attractively toned, choice uncirculated.* £500-800

Also looks like this could be from a slightly earlier era than the modern proof restrikes.



596 Silver Original Proof Rupee, 1840B, *obv* VICTORIA QUEEN, *rev* EAST INDIA COMPANY, 25 berries from the 1849 series (SW 3.35). *In NGC holder, graded PF64, even dark grey tone.* £1500-2000



597 Silver Original Proof Rupee, 1840C, obverse I, *obv* VICTORIA QUEEN, *rev* EAST INDIA COMPANY, 35 berries (SW 2.17). *Moderately toned, choice uncirculated.* £1000-1500



598 Silver Original Proof Rupee, 1840M, obverse I, *obv* VICTORIA QUEEN, "S" on truncation, *rev* EAST INDIA COMPANY, 19 berries (SW 2.27). *Brilliant, choice uncirculated.* £1500-2000



599 Silver Original Proof Rupee, 1840C, obverse I, *obv* VICTORIA QUEEN, *rev* EAST INDIA COMPANY, 34 berries (SW 2.18). *Even grey tone, choice uncirculated.* £1000-1500



600 Silver Early Proof Restrike Rupee, 1840C, *obv* VICTORIA QUEEN, *rev* EAST INDIA COMPANY (SW 2.18). *Mottled tone, choice uncirculated.* £800-1200

Much like the coin in the previous lot but with some die rust on the neck. A 19th Century striking.



- 601 Silver Proof Restrike Rupee, 1840C, *obv* VICTORIA QUEEN, *rev* EAST INDIA COMPANY (SW 2.18). *Brilliant, choice uncirculated.* £400-600

Much like the coin in the previous lot but the die rust has been polished off.



602

603

- 602 Silver Proof Restrike Rupee, 1840B, obverse I, *obv* VICTORIA QUEEN, bust 1mm from the edge, no lock of hair on front ribbon, ridge on back ribbon, small trace of rust at lower part of bust, *rev* EAST INDIA COMPANY, 35 berries, no crescent (SW unlisted). *Brilliant about uncirculated, a few light hairlines.* £400-600
- 603 Silver Proof Restrike Rupee, 1840B, obverse I, *obv* VICTORIA QUEEN, bust 2mm from the edge, no lock of hair on the front ribbon but there is one on the back ribbon, no ridge on back ribbon, no sign of rust, *rev* EAST INDIA COMPANY, as previous lot but a later striking with die wear evident, especially in the berries (SW unlisted). *Brilliant with a touch of tone, choice uncirculated.* £400-600



- 604 Silver Original Proof Rupee, 1862C, obverse A, *obv* VICTORIA QUEEN, reverse I (SW 4.52). *Toned, choice uncirculated.* £1000-1500



605



606

- 605 Silver Early Proof Restrike Rupee, 1862C, A/II, *obv* VICTORIA QUEEN (SW 4.44). *Toned, choice uncirculated.* £500-800
- 606 Silver Early Proof Restrike Rupee, 1862C, obverse 3.75 panels, with V and J, round beads which is obverse E, *obv* VICTORIA QUEEN, the reverse is from the Pattern by Dass (SW unlisted). *Toned, choice uncirculated.* £500-800

The difference is that the bud and the top leaves are very close together and this seems to be found on most restrikes



607



608

- 607 Silver Proof Restrike Rupee, 1862C, A/I, *obv* VICTORIA QUEEN, as previous lot but later restrike (SW 4.52). *Brilliant, choice uncirculated.* £400-600
- 608 Silver Proof Restrike Rupee, 1874C, *obv* VICTORIA QUEEN (SW 5.6). *Brilliant, choice uncirculated, touch of obverse tone.* £400-600

ex J J Pittman collection



- 609 Silver Original Proof Rupee, 1875C, obverse A, *obv* VICTORIA QUEEN, reverse I, no C mintmark but the "7" in the date is a Calcutta "7" (SW 5.13). *Toned, choice uncirculated.* £1000-1500



- 610 Silver Proof Restrike Rupee, 1875, obverse A, *obv* VICTORIA QUEEN, reverse I, with the C in the lower flower (SW 5.13). *Toned, a few small marks, otherwise uncirculated.* £400-600



611



612



611 Silver Proof Restrike Rupee, 1876C, obverse A1, *obv* VICTORIA QUEEN, reverse I (SW 5.18a). *Brilliant, light hairlines but still choice uncirculated.* £400-600

612 Silver Proof Restrike Rupee, 1876C, obverse A2, *obv* VICTORIA QUEEN, reverse I (SW 5.19). *Brilliant, some hairlines and toning spots on the edge, otherwise uncirculated.* £400-600

ex JJ Pittman collection



613



614



613 Silver Proof Restrike Rupee, 1877C, *obv* VICTORIA EMPRESS (SW 6.30). *Brilliant with a touch of cloudiness, choice uncirculated* £400-600

614 Silver Early Proof Restrike Rupee, 1878C, *obv* VICTORIA EMPRESS (SW 6.38). *Toned, choice uncirculated.* £500-800



615 Silver Proof Restrike Rupee Mule, 1878B, *obv* VICTORIA EMPRESS, Queen Victoria, no mintmark, except for the slant topped "1" in the date indicative of Bombay (SW unlisted). *Dark blue tone, choice uncirculated.* £500-800



616 Silver Restrike Rupee, 1880C, obverse A4, *obv* VICTORIA EMPRESS, reverse I (SW unlisted). *In NGC holder, graded PL63, very pleasantly toned in the blue of the Bombay mint envelopes.* £800-1000



617 Silver Proof Restrike Rupee, 1881C, *obv* VICTORIA EMPRESS (SW 6.57). *Gem uncirculated.* £1000-1500

The most impressive frosted bust one could possibly hope to find



618 Silver Proof Restrike Rupee, 1882C, *obv* VICTORIA EMPRESS (SW 6.62). *Darkly toned, choice uncirculated.* £500-800



619 Silver Early Proof Restrike Rupee, 1882C, *obv* VICTORIA EMPRESS (SW 6.63). *Darkly toned, choice uncirculated.* £800-1000

ex Pridmore collection



620



621

620 Silver Proof Restrike Rupee, 1884C, *obv* VICTORIA EMPRESS (SW 6.74). *Brilliant, choice uncirculated.* £500-800

621 Silver Proof Restrike Rupee, 1887C, *obv* VICTORIA EMPRESS (SW 6.97). *Darkly toned, choice uncirculated.* £500-800



622



623

622 Silver Proof Restrike Rupee, 1888C, *obverse* A1, *obv* VICTORIA EMPRESS (SW unlisted). *Brilliant uncirculated with light hairlines.* £500-800

623 Silver Proof Restrike Rupee, 1890C, *obv* VICTORIA EMPRESS (SW 6.113). *Brilliant, a few light marks, otherwise uncirculated.* £500-800



624 Silver Early Proof Restrike Rupee, 1890C, *obv* VICTORIA EMPRESS (SW 6.113a). *Darkly toned, superb uncirculated.* £800-1200



625 Silver Early Proof Restrike Rupee, 1890C, *obverse* C, 3rd panels, *obv* VICTORIA EMPRESS, *reverse* I (SW unlisted). *Toned, superb uncirculated.* £800-1200



626



627

626 Silver Early Proof Restrike Rupee, 1891C, obverse A, *obv* VICTORIA EMPRESS (SW 6.117a). *Nicely toned, choice uncirculated.* £800-1000

627 Silver Proof Restrike Rupee, 1891C, obverse C, *obv* VICTORIA EMPRESS (SW 6.117). *Brilliant uncirculated, light hairlines.* £400-600



628



629

628 Silver Original Proof Rupee, 1891B, obverse C, *obv* VICTORIA EMPRESS (SW 6.120). *Toned, superb uncirculated.* £1000-1500

629 Silver Rupee, 1892C, *obv* VICTORIA EMPRESS (SW 6.126). *In NGC holder, graded PL62, light hairlines, mostly in the lacquer.* £500-800



630



631

630 Silver Original Proof Rupee, 1893C, obverse C, *obv* VICTORIA EMPRESS (SW 6.134). *Toned, superb uncirculated.* £1000-1500

631 Silver Early Proof Restrike Rupee, 1893C, obverse A1, *obv* VICTORIA EMPRESS (SW unlisted). *Toned, superb uncirculated.* £500-800



632 Silver Early Proof Restrike Rupee, 1893C, obverse C, *obv* VICTORIA EMPRESS (SW 6.134). *Brilliant uncirculated with light hairlines.* £500-800



- 633 Gold Early Proof Restrike Rupee, 1893C, off-metal strike in gold, *obv* VICTORIA EMPRESS (SW 6134a). *A few light marks, choice uncirculated.* £4000-6000



- 634 Silver Original Proof Rupee, 1893B, *obv* VICTORIA EMPRESS (SW 6.137). *Darkly toned, choice uncirculated.* £1000-1500



- 635 Silver Early Proof Restrike Rupee, 1894C, proof only date, *obv* VICTORIA EMPRESS (SW 6.139). *Moderately toned, choice uncirculated.* £1000-1500



- 636 Silver Proof Restrike Rupee, 1897C, obverse A, *obv* VICTORIA EMPRESS, with V and J on Queen's dress (SW unlisted). *Brilliant uncirculated with light hairlines.* £1000-1500



637 Silver Original Proof Rupee, 1897B, *obv* VICTORIA EMPRESS (SW 6.144). *Toned, superb uncirculated.* £1000-1500



638



639

638 Silver Proof Restrike Rupee, 1897B, obverse A1, *obv* VICTORIA EMPRESS (SW unlisted). *Brilliant uncirculated with superb frost on the bust, a few light hairlines.* £500-800

639 Silver Original Proof Rupee, 1898C, C/1, *obv* VICTORIA EMPRESS (SW 6.146). *Uncirculated and toned.* £800-1000

The coin has been lightly polished some time ago so it is impossible to assess when it was struck, however, the edge and the portrait have the look of an early restrike.



640 Silver Proof Rupee, 1898B, very early Proof Restrike or Original Proof, obverse A3, *obv* VICTORIA EMPRESS (SW 6.148). *Nicely toned, superb uncirculated.* £1000-1500

ex J J Pittman collection



- 641 Silver Proof Rupee, 1898B, very early Proof Restrike or Original Proof, obverse C2, *obv* VICTORIA EMPRESS (SW 6.150). *Nicely toned, superb uncirculated.* £1000-1500



642



643

- 642 Silver Proof Restrike Rupee, 1900C, obverse C3, *obv* VICTORIA EMPRESS (SW 6.154). *Has been lightly polished after it left the mint, about uncirculated.* £300-500

- 643 Silver Proof Restrike Rupee, 1900B, obverse A3, *obv* VICTORIA EMPRESS (SW 6.163). *Attractive blue tone, choice uncirculated.* £500-800



644



645

- 644 Silver Early Proof Restrike Rupee, 1901C, obverse C2, *obv* VICTORIA EMPRESS (SW unlisted). *Nicely toned, superb uncirculated.* £600-800

- 645 Silver Proof Restrike Rupee, 1901B, obverse A1, *obv* VICTORIA EMPRESS (SW 6.165). *Brilliant, choice uncirculated.* £500-800



- 646 Silver Proof Rupee, 1903C, *obv* EDWARD VII KING & EMPEROR (SW 7.16). Toned, a few light marks but still very attractive, otherwise uncirculated. £1000-1500

Important in that it is one of the few early brilliant proofs of King Edward VII



- 647 Silver Original Matte Proof Rupee, 1903C, *obv* EDWARD VII KING & EMPEROR (SW 7.16). Attractively toned, superb uncirculated. £800-1000

ex J J Pittman collection



- 648 Silver Proof Restrike Rupee, 1903C, *obv* EDWARD VII KING & EMPEROR (SW 7.16). Brilliant uncirculated with a few minor spots. £300-500



649 Silver Original Proof Rupee, 1903B, raised B mintmark, *obv* EDWARD VII KING & EMPEROR. *Satin finish, gem uncirculated.* £1000-1500

It is very difficult to see this B mintmark with the naked eye and it is easy to see why it may have been missed many times in the past, but with a powerful glass it is quite identifiable



650 Silver Original Matte Proof Rupee, 1904C, *obv* EDWARD VII KING & EMPEROR (SW 7.24). *Toned, choice uncirculated.* £1000-1500



651



652

651 Silver Proof Restrike Rupee, 1904B, probably an early Proof Restrike, *obv* EDWARD VII KING & EMPEROR (SW 7.26). *Brilliant finish, but a number of marks and mishandling which make the restrike attribution difficult, about uncirculated.* £300-500

652 Silver Proof Restrike Rupee, 1904B, *obv* EDWARD VII KING & EMPEROR (SW 7.26). *Lacquered, brilliant about uncirculated, a few light hairlines and toning spots on the edge.* £300-500



653



654

653 Silver Proof Restrike Rupee, 1905C, *obv* EDWARD VII KING & EMPEROR (SW 7.28). *Lightly toned, choice uncirculated.* £300-500

654 Silver Proof Restrike Rupee, 1905B, *obv* EDWARD VII KING & EMPEROR, *rev* dot on vine (SW 7.30). *Lacquered, a few light hairlines and small toning spots on the edge where the lacquer was not applied properly, brilliant uncirculated.* £300-500



655 Silver Proof Restrike Rupee, 1906B, *obv* EDWARD VII KING & EMPEROR (SW 7.34). *Lacquered, light hairlines, otherwise brilliant uncirculated.* £300-500



656 Silver Proof Restrike Rupee, 1907B, *obv* EDWARD VII KING & EMPEROR (SW 7.38). *Lacquered, light hairlines, otherwise brilliant uncirculated.* £300-500



657 Silver Original Proof Rupee, 1908C, *obv* EDWARD VII KING & EMPEROR (SW 7.40). *Matte finish, toned, gem uncirculated.* £1500-2000



658 Silver Proof Restrike Rupee, 1908B, *obv* EDWARD VII KING & EMPEROR, *rev* dot on vine, very weak B mintmark (SW 7.43). *Lacquered with some cloudiness in the fields, otherwise uncirculated.* £300-500



659



660



659 Silver Proof Restrike Rupee, 1909C, *obv* EDWARD VII KING & EMPEROR (SW 7.45). *Lacquered, brilliant uncirculated.* £400-600

660 Silver Proof Restrike Rupee, 1909B, *obv* EDWARD VII KING & EMPEROR, *rev* no hint of the B mintmark, dot on vine (SW 7.48). *Lacquered with a touch of cloudiness on the reverse, uncirculated.* £350-550



661 Silver Original Proof Rupee, 1909B, *obv* EDWARD VII KING & EMPEROR (SW 7.48). Moderately toned, but not enough to mar the effect of the beautiful mirror surface, choice uncirculated. £1500-2000



662



663

662 Silver Proof Restrike Rupee, 1910C, *obv* EDWARD VII KING & EMPEROR (SW 7.50). Lacquered, some light handling marks, otherwise brilliant uncirculated. £400-600

663 Silver Early Proof Restrike Rupee, 1910B, *obv* EDWARD VII KING & EMPEROR, *rev* dot on vine, hint only of B mintmark (SW 7.53). Moderately toned, some light handling marks, otherwise uncirculated. £500-800



664



665

664 Silver Proof Restrike Rupee, 1910B, *obv* EDWARD VII KING & EMPEROR, *rev* dot on vine, hint only of the upright of the B mintmark (SW 7.53). Lacquered, a few light hairlines, otherwise brilliant uncirculated. £300-500

665 Silver Proof Restrike Rupee, 1911C, with a later George V die without the "pig", *obv* GEORGE V KING EMPEROR (SW 8.13). Lacquered, lightly toned with a bit of cloudiness in the lacquer, uncirculated. £500-800



666 Silver Original Proof Rupee, 1911B, "pig" obverse, *obv* GEORGE V KING EMPEROR (SW 8.16). Moderately toned, superb uncirculated. £2000-3000



667

668

667 Silver Proof Restrike Rupee, 1912C, *obv* GEORGE V KING EMPEROR (SW 8.18). Moderately toned, choice uncirculated. £500-800

668 Silver Proof Restrike Rupee, 1912B, *obv* GEORGE V KING EMPEROR (SW 8.20). Grey and blue tone, choice uncirculated. £500-800



669 Silver Original Proof Rupee, 1913B, *obv* GEORGE V KING EMPEROR (SW 8.24). Toned, superb uncirculated. £1000-1500



670



671

670 Silver Proof Restrike Rupee, 1913B, *obv* GEORGE V KING EMPEROR (SW 8.24). *Lacquered with a bit of cloudiness, uncirculated.* £500-800

671 Silver Original Proof Rupee, 1914C, *obv* GEORGE V KING EMPEROR (SW 8.26). *Light grey tone, choice uncirculated.* £1000-1500



672



673

672 Silver Proof Restrike Rupee, 1914B, *obv* GEORGE V KING EMPEROR (SW 8.28). *Light toning, minimum hairlines, otherwise choice uncirculated.* £500-800

673 Silver Proof Restrike Rupee, 1915B, *obv* GEORGE V KING EMPEROR (SW 8.32). *Moderate blue tone, superb uncirculated.* £800-1000



674



675

674 Silver Original Proof Rupee, 1916C, *obv* GEORGE V KING EMPEROR (SW 8.34). *Moderate grey tone, choice uncirculated.* £1000-1500

675 Silver Original Proof Rupee, 1916B, *obv* GEORGE V KING EMPEROR (SW 8.36). *Toned with a horizontal dark stripe on the obverse, otherwise choice uncirculated.* £1000-1500



676



677

676 Silver Proof Restrike Rupee, 1916B, *obv* GEORGE V KING EMPEROR (SW 8.36). *Lightly toned with light hairlines, but still choice uncirculated.* £500-800

677 Silver Proof Restrike Rupee, 1917B, *obv* GEORGE V KING EMPEROR (SW 8.40). *Attractively toned, superb uncirculated.* £500-800



678

679

678 Silver Proof Restrike Rupee, 1918B, *obv* GEORGE V KING EMPEROR (SW 8.44). *Cloudy surfaces, a few light marks, about uncirculated.* £400-600

679 Silver Proof Restrike Rupee, 1919C, *obv* GEORGE V KING EMPEROR (SW 8.46). *Brilliant, superb uncirculated.* £500-800



680 Silver Proof Restrike Rupee, 1919B, *obv* GEORGE V KING EMPEROR (SW 8.49). *Brilliant uncirculated, a few light hairlines.* £500-800



681 Silver Original Proof Rupee, 1920C, *obv* GEORGE V KING EMPEROR (SW 8.51). *Toned, choice uncirculated.* £1000-1500



682 Silver Original Proof Rupee, 1920B, *obv* GEORGE V KING EMPEROR (SW 8.53). *Pleasantly toned, superb uncirculated.* £1000-1500



683 Silver Rupee, 1920B, *obv* GEORGE V KING EMPEROR (SW 8.53). *Brilliant about uncirculated, light hairlines.* £500-800



684 Silver Original Proof Rupee, 1921B, *obv* GEORGE V KING EMPEROR (SW 8.55). Nicely toned, a few light marks under the tone, choice uncirculated. £1500-2000



685 Silver Proof Restrike Rupee, 1921B, overdate 21 struck over 19, most unusual, *obv* GEORGE V KING EMPEROR (SW 8.56). Pleasantly toned, superb uncirculated. £1000-1500



686 Silver Proof Restrike Rupee, 1922B, *obv* GEORGE V KING EMPEROR (SW 8.58). *Lightly toned with light hairlines, otherwise uncirculated.* £1000-1500



687 Silver Proof Restrike Rupee Mule, 1938C, *obv* GEORGE V KING EMPEROR, bust of George V (SW unlisted). *Choice uncirculated.* £800-1000



688 Silver Proof Restrike Rupee, 1938C, obverse 1, *obv* GEORGE VI KING EMPEROR (SW 9.7). *Choice uncirculated.* £500-800



689 Silver Proof Restrike Rupee, 1938C, obverse 2, *obv* GEORGE VI KING EMPEROR (SW 9.8). *Lacquered, brilliant uncirculated.* £500-800



690 Silver Original Proof Rupee, 1938C, obverse 2, *obv* GEORGE VI KING EMPEROR (SW 9.8). *Superb uncirculated.* £2000-3000

Has somewhat the look of a restrike but this was characteristic of the dies of the time. Comparing this piece and the coin in the previous lot is a great way to learn about the differences between original and Proof Restrikes



691 Silver Original Proof Rupee, 1944L, *obv* GEORGE VI KING EMPEROR (SW 9.28a). *Attractively toned, choice uncirculated.* £1000-1500



692 Silver Early Proof Restrike Rupee, 1945B, *obv* GEORGE VI KING EMPEROR, security edge (SW 9.30). *Superb frosting on the bust and polished rims, lacquered, uncirculated.* £800-1000



693 Silver Original Proof Rupee, 1945L, *obv* GEORGE VI KING EMPEROR (SW 9.35). *Nicely toned, a number of very light hairlines on the obverse, otherwise uncirculated.* £1000-1500

ex JJ Pittman collection



694 Silver Proof Restrike Rupee, 1947B, *obv* GEORGE VI KING EMPEROR (SW 9.38). *Lacquered, a few light marks, otherwise choice uncirculated.* £400-600



- 695 Gold 5-Rupees, 1870C, *obv* VICTORIA QUEEN, mature bust currency issue (SW 4.21). *Light handling marks, about extremely fine.* £2000-3000



- 696 Gold Proof Restrike 5-Rupees, 1870C, *obv* VICTORIA QUEEN, mature bust (SW 4.22). *A few handling marks, otherwise uncirculated.* £1500-2000



- 697 Gold Early Proof Restrike 5-Rupees, 1870C, *obv* VICTORIA QUEEN, young bust (SW 4.23). *Light hairlines in the obverse field, otherwise uncirculated.* £2000-3000

It is much harder to assess when these gold coins were struck because gold does not tone that much. This piece has the raised outer sliver of metal at the outside of the rim, the earliest proof restrikes had these and it was not until later on in the striking run that the mint started to file this off. The bust is heavily frosted making for an attractive coin.



698 Gold Proof Restrike 5-Rupees, 1875C, *obv* VICTORIA QUEEN (SW 5.4). Has been harshly cleaned with resultant hairlines, about uncirculated. £1000-1500

Still with the raised bit of metal at the edge, but very little in the way of a frosted obverse



699 Gold Proof Restrike 5-Rupees, 1879C, *obv* VICTORIA EMPRESS, young bust, flower in lower part of jabot in centre (SW 6.25). Choice uncirculated. £1500-2000



700 Gold Proof Restrike 5-Rupees, 1879C, *obv* VICTORIA EMPRESS, mature bust (SW 6.29). A little dull but very few hairlines, about uncirculated. £1500-2000



701 Gold 10-Rupees, 1870C, *obv* VICTORIA QUEEN, mature bust currency issue (SW 4.15). *Light handling marks, otherwise about extremely fine.* £2000-3000



702 Gold Proof Restrike 10-Rupees, 1870C, *obv* VICTORIA QUEEN, mature bust (SW 4.16). *Heavily frosted bust, a few light marks, otherwise uncirculated.* £1500-2000



703 Gold Early Proof Restrike 10-Rupees, 1870C, *obv* VICTORIA QUEEN, young bust (SW 4.18). *Superb frost, a few light handling marks, otherwise uncirculated.* £2000-2500

A deep yellow gold and with the raised rim that, as of yet, had not been filed off



- 704 Gold Proof Restrike 10-Rupees, 1870C, *obv* VICTORIA QUEEN, young bust (SW 4.18). *Nice uncirculated proof.* £1500-2000

The raised rim is still there but now the gold is a brighter yellow, without quite as much of a three-dimensional effect as the other 10-Rupees in this auction



- 705 Silver Restrike 10-Rupees, 1870, off metal strike in silver, *obv* VICTORIA QUEEN, mature bust (SW 4.17). *In NGC holder, graded PF65 Cameo, lightly toned.* £1500-2000



- 706 Gold Original Proof 10-Rupees, 1875C, by all appearances an original proof, *obv* VICTORIA QUEEN (SW 5.3). *Superb uncirculated with a minimum of hairlines.* £5000-7000

A slightly different 'look' from the coin in the previous lot, which helps the assessment of this coin as an original proof



707 Gold Proof Restrike 10-Rupees, 1878C, *obv* VICTORIA EMPRESS (SW 6.20). Gem uncirculated with heavily frosted mature bust. £2000-2500



708 Gold Proof Restrike 10-Rupees, 1879C, *obv* VICTORIA EMPRESS (SW 6.21). Gem uncirculated with heavily frosted mature bust. £2000-2500



709 Silver Restrike 10-Rupees, 1879, off metal strike in silver, *obv* VICTORIA EMPRESS, mature bust (SW 6.22). In NGC holder, graded PF63, moderately toned and slightly overgraded. £1200-1500



710 Gold Early Proof Restrike 15-Rupees, 1918, *obv* GEORGE V KING EMPEROR (SW 8.2). *A few light hairlines, but still choice uncirculated.* £1500-2000



711 Silver 15-Rupees, 1918, off metal strike in silver, *obv* GEORGE V KING EMPEROR (SW 8.4). *In NGC holder, graded PF64, moderately toned and slightly overgraded.* £500-800



712 Gold Proof Restrike Mohur, 1835B, *obv* WILLIAM III KING, no initial on truncation of dot after date, *rev* EAST INDIA COMPANY (SW 1.16). *Heavily frosted bust, gem uncirculated.* £2000-3000



713 Gold Proof Restrike Mohur, 1841C, plain "4" in date, *obv* VICTORIA QUEEN, *rev* EAST INDIA COMPANY, earlier design with fuller vegetation (SW 3.9). *Superb uncirculated*. £1500-2000



714 Gold Proof Restrike Mohur, 1862C, *obv* VICTORIA QUEEN, mature bust (SW 4.8). *A little cloudy in part of the obverse field but choice uncirculated*. £1500-2000



715 Gold Proof Restrike Mohur, 1870C, *obv* VICTORIA QUEEN, young bust (SW 4.9). Numerous light hairlines from a poor attempt at cleaning, about uncirculated. £1000-1500



716 Gold Proof Restrike Mohur, 1870C, *obv* VICTORIA QUEEN, mature bust (SW 4.10). Numerous very light marks, about uncirculated. £1000-1500



717 Silver Proof Mohur, 1870, off metal strike in silver, *obv* VICTORIA QUEEN, mature bust (SW 4.11). In NGC holder, graded PF64. £1200-1500



718 Gold Early Proof Restrike Mohur, 1875C, *obv* VICTORIA QUEEN (SW 5.2). Numerous marks on the *obverse*, otherwise uncirculated. £1500-2000



719 Silver Proof Mohur, 1878B, off-metal strike in silver, *obv* VICTORIA EMPRESS (SW 6.4). In NGC holder, graded PR64, small number of light marks. £1000-1500



720 Gold Proof Restrike Mohur, 1878C, *obv* VICTORIA EMPRESS, young bust (SW 6.5). Gem uncirculated. £5000-8000



721 Silver Proof Mohur, 1879, off metal strike in silver, young bust pattern, obverse A, *obv* VICTORIA EMPRESS (SW 6.8). In NGC holder, graded PF62, moderately toned and correctly graded. £1200-1500



722 Gold Proof Restrike Mohur, 1879B, *obv* VICTORIA EMPRESS, young bust (SW 6.7). Gem proof with an amazing cameo from the frosted bust and proof fields. £4000-6000



723 Gold Proof Restrike Mohur, 1885C, *obv* VICTORIA EMPRESS (SW 6.14). *Lightly brushed but still very attractive, otherwise uncirculated.* £2000-3000



724 Gold Early Proof Restrike 2-Mohurs, 1835C, *obv* WILLIAM III KING, *rev* EAST INDIA COMPANY (SW 1.4). *Superb frosted bust, a few light marks in the fields, otherwise choice uncirculated.* £10,000-15,000

Information for Bidders

Admission

Admission to our Public Auction is free; by registering for the auction you are agreeing to abide by the conditions set out in our printed catalogue and on our website.

Examination of Lots

You are encouraged to view the lots before sale and attend the auction in person. Viewing of the lots may be done by appointment in the week prior to the auction at our offices or on an official viewing day.

The catalogue is printed with estimates alongside each lot. This is intended as a price guide for interested bidders. It is our opinion of the value of the lot but bidders should rely on their own judgement of the value. Bidders should be prepared for prices to rise if there is competition for the lot. All lots can achieve hammer prices both above and below the published pre-sale estimate. Usually each lot is reserved at 80% of the lower estimate and bids below this are unlikely to be accepted.

Bidding at the Auction

Bidding may be carried out by you in person or by a representative of your choice (please ask us for further information). Please collect your bidding number from the registration table at the auction room. You should arrive in plenty of time for the lots you are interested in. A time guide is printed at the front of the catalogue and approximately 200 lots are sold per hour. However bidders are reminded that this is a guide only and Baldwin's will not be responsible if you miss your lot.

If you do not have an account with us, we may ask you for a reference from a bank or other credit referee (eg another dealer or auction house) and you may be asked to leave a deposit before bidding.

Absentee Commission Bids

If you are unable to attend the Auction personally, you may place a commission bid through us and we will try and purchase the lot for you at the lowest price possible. You must complete a Commission Bid Form found in this catalogue which must include your highest bid for each lot. All commission bids must be submitted in writing either by

post, email or fax to Baldwin's offices to arrive not later than 24 hours before the auction. We do not accept bids left by telephone. Please include your street address in emails.

Commission bids received less than 24 hours before the auction will only be accepted at our discretion and we cannot guarantee that the commission bid will be placed.

We do not charge for these services and therefore we will not be liable for errors in executing commission bids.

We offer a state-of-the-art Live Bidding system over the internet via www.the-saleroom.com/baldwins. This service is free and requires you only to register your details, together with a valid credit card for verification. You may either bid live, making use of the audio and video, or leave commission bids on the website which will be automatically executed on your behalf. These commission bids cannot be seen by the auctioneer. Invoices will be mailed to you after the auction in the usual way.

Purchase Price

The price paid by the bidder is the hammer price plus 20% buyer's premium (plus VAT). Lots exported outside of the European Union may not be subject to VAT. Please ask for further information from us where this may apply to you.

You are encouraged to arrange your own collection/shipment. Alternatively lots will be sent by Royal Mail, recorded and insured delivery. Postage and insurance will be charged as additional costs.

Payment

An invoice will be supplied on request during and after the Auction showing the total amount due to us. You must pay in full before the lot(s) can be delivered to you.

Guarantee

We are a member of the International Association of Professional Numismatists and therefore, as a buyer, you will benefit from a guarantee for all lots against forgeries as required by IAPN's rules of membership. Please see the Conditions of Sale for details of the terms of our guarantee.

Methods of Payment

• Sterling (£) bank transfer to:

National Westminster Bank
P O Box 113
2a Charing Cross Road
London WC2H 0PD
Account name **A H Baldwin & Sons Ltd**
Account number 24525146
Sort code 60 40 05
IBAN GB80NWBK60400524525146
Swift code NWBKGB2L

Please include your name and invoice number when sending instructions to the bank and inform Baldwin's of your payment in order to speed-up the delivery of your purchases

- **Sterling (£) cash, banker's draft or a personal cheque from a UK bank** made payable to **A H Baldwin & Sons Ltd**. Seven [7] business days' clearance is required for personal cheques
- **Credit/Debit Card** payments are subject to a 2% surcharge - including Mastercard, Visa, America Express and all non-UK cards. There is no surcharge for UK debit cards.
- **United States dollars (US\$)** are accepted either in cash or by a personal cheque made payable to **A H Baldwin & Sons Ltd**. Please ask for our current exchange rate. Ten [10] business days' clearance is required for US\$ personal cheques
- **Euros (€)** are accepted in cash only and are subject to a £10 surcharge. Please ask for our current exchange rate
- Cash payments are subject to maximum limits imposed by law.

CONDITIONS OF SALE

1. APPLICATION AND CONTRACTUAL RELATIONSHIP

- 1.1. By making a bid, a Bidder acknowledges his acceptance of these Conditions and will be bound by them.
- 1.2. Baldwin's acts as agent for the Seller for the sale of a Lot to the Buyer unless Baldwin is the owner of the Lot. As such, Baldwin is not responsible for any default by the Seller or the Buyer.
- 1.3. The contract for the sale of a Lot is between the Seller and the Buyer and is subject to these Conditions and the Seller's Conditions.

2. PRE-SALE AND DESCRIPTIONS

- 2.1. Statements made by us in a Catalogue, during the course of the Auction or elsewhere, describing a Lot including its authorship, origin, age, size, condition, genuineness, authenticity or value are intended as a guide for interested Bidders. These are statements of opinion only and should not be relied on as statements of fact. Illustrations of the Lots are for general identification only.
- 2.2. Lots by their nature are usually aged and varied in condition. The absence of any description of a defect, damage, modification or restoration in any Catalogue does not imply that there are none.
- 2.3. Coins are graded to accepted UK standards to the best ability of our specialists. You acknowledge that the grading of coins is subjective and may vary from specialist to specialist, as the process is by nature an art and not a science. For this reason, we do not automatically accept and are not bound by the opinions of third party coin grading services for any purposes including before and after the sale of a Lot.
- 2.4. If you are interested in a Lot, we strongly recommend that you view it in person before the Auction and form your own opinion of the description of the Lot.
- 2.5. We reserve the right to change any aspect of the published description of a Lot prior to the auction. Any change may be published on our website, displayed at the auction, announced by the auctioneer prior to the sale and/or communicated in any other manner.
- 2.6. All copyright in Catalogues including images belongs to Baldwin's.

3. ABSENTEE COMMISSION BIDS

- 3.1. If you are unable to attend the Auction personally, you may submit a Commission Bid and we will endeavour to purchase the Lot on your behalf for the lowest price possible. You must submit this in writing using the Commission Bid Form and send it to us by post, fax, email or delivery to our offices at least 24 hours prior to the Auction.
- 3.2. For all Commission Bids, you must supply your name and address, contact telephone number and email. You must also provide the Lot number and description of the Lot, the amount of your Bid and any other information requested in the Commission Bid Form or by us. It is your responsibility to provide the correct information and to ensure that we have received your Commission Bid.
- 3.3. We do not charge for this service and therefore we will not incur any liability for executing (or failing to execute) the Commission Bid.
- 3.4. If you submit a Commission Bid verbally (whether by telephone or otherwise), we shall not be responsible for any misunderstandings (by either us or our agents or you) in relation to your Bid. All bids made in this way must be confirmed in writing before the auction.
- 3.5. If we receive two Commission Bids for equal value for the same Lot, the Bid received first by us shall take precedence.
- 3.6. "Buy" commissions [and unlimited Commission Bids] will not be accepted.

4. AUCTION SALE

- 4.1. Before the auction, all potential Bidders must notify their name and address to the auctioneer and if required provide proof of identity to our satisfaction and bank or other credit references.
- 4.2. The highest Bidder for each Lot shall be the Buyer. If there is a dispute, the auctioneer shall have absolute discretion to determine the dispute including re-offering the disputed Lot for sale.
- 4.3. A Bidder must submit a bid for an entire Lot and each lot constitutes a separate sale. The auctioneer shall however have an absolute discretion to divide any Lot, to combine any two or more Lots, or to withdraw any Lot from the auction without giving any reason (including after the hammer has fallen). Bidding shall be regulated at the absolute discretion of the auctioneer. The auctioneer has the right to refuse any bid.

4.4. Subject to Condition 4.2, the contract for the sale of the Lot is concluded on the fall of the hammer.

4.5. All Lots are offered for sale subject to any Reserve.

4.6. You cannot cancel your purchase of a Lot once the hammer has fallen.

5. PAYMENT

- 5.1. The Purchase Price payable by a Buyer is the Hammer Price plus a Buyer's Premium of 20% of the Hammer Price. VAT is payable in addition unless the Lot is exempt or zero-rated.
- 5.2. The symbol 'G' appearing next to a lot in this catalogue denotes the item is 'Investment Gold' and, therefore, a VAT-registered trader can submit a claim to H M Revenue and Customs to recover the VAT element of the Buyer's Premium.
- 5.3. Any lot marked with a dagger (†) is subject to import VAT at 5%, this will be added to the hammer price and is payable by the buyer if resident in the EU. If the lot is being exported outside the EU, this import VAT can be waived or refunded on proof of export.
- 5.4. The Buyer of a Lot shall pay the Purchase Price in full before the Lot can be delivered to the Buyer.
- 5.5. Except where Condition 5.4 applies, any part of the Purchase Price outstanding after the Auction shall be payable by you within 14 days of the date of the auction, the due date.
- 5.6. The Purchase Price is payable by you in full. You are not entitled to set-off any amounts that you claim are due from us or anyone else or make any other deductions.
- 5.7. Unless we have agreed in writing otherwise, you shall act on your own account as principal in respect of the sale and therefore if you accept a commission from a third party to bid on their behalf, you do so at your own risk and will remain personally liable (jointly with your principal) to us for the Purchase Price in accordance with these Conditions.
- 5.8. The methods of payment and surcharges are set out in the Catalogue.
- 5.9. If the Purchase Price has not been settled within 30 days of the auction date a £50 late payment fee will be added and interest will be charged at 2% per month from the due date of payment to the date that cleared funds are received whether that is before or after any legal judgment. This is without prejudice to any other rights that we have for non-payment.
- 5.10. If you fail to comply with your obligations under these Conditions, the Lot, in respect of such non-compliance, may at our discretion be put up for sale at auction or privately and resold. In this case, you will be liable in full and will indemnify us for all losses, costs and expenses (including legal costs) incurred as a result, including the costs of the resale and the amount (if any) by which the Hammer Price obtained on the resale is less than the Hammer Price obtained on the original sale of the Lot to the Buyer.

6. RISK, TITLE AND DELIVERY

- 6.1. The risk of damage/loss to the Lot will pass to the Buyer on the fall of the hammer. Title in a Lot will not pass to the Buyer until the Purchase Price has been paid in full.
- 6.2. Unless agreed by us, you should collect the Lot within 7 days of the date of the auction. We reserve the right to charge for storage and to resell by auction or privately without notice to you, if a Lot is not collected. Alternatively we will send the Lot to you by recorded post. Postage and insurance costs will be charged as additional costs.
- 6.3. Except in relation to Forgeries, you must satisfy yourself that the correct Lot has been delivered to you at the time of collection/delivery. We will not be responsible for any discrepancy which might be discovered after the Lots have been collected. If we have shipped the Lot to you, we will not be responsible for any discrepancies if you fail to notify us within 24 hours of receipt.
- 6.4. It is the Buyer's responsibility to obtain any necessary import, export or other licences required in relation to a Lot.

7. GUARANTEE FOR FORGERIES

- 7.1. Baldwin's is a member of the International Association of Professional Numismatists and in accordance with the conditions of membership, provide a guarantee to the Buyer for all Lots against Forgeries on the terms set out in these Conditions ('Guarantee').
- 7.2. For the purposes of these Conditions, a 'Forgery' means an imitation that has been created with the fraudulent intent to deceive in respect of the authorship, origin, date, age, period and the correct

description does not correspond with the description in the Catalogue and as a result has a value significantly less than it would have been had it been genuine.

7.3. You must notify us in writing within one month of you becoming aware that the Lot may be a Forgery. The Lot must be returned to us in the same condition as at the time of sale and you must submit evidence that the Lot is a Forgery, the onus being on you to prove that it is a Forgery.

7.4. You acknowledge that:

(a) we reserve the right to re-assess the Lot or engage at our expense any expert or authority considered by us at our sole discretion to have the necessary expertise to undertake a re-assessment of the Lot;

(b) following our re-assessment of the Lot, you agree to be bound by our decision as to whether or not the Lot is a Forgery.

7.5. You shall not be entitled to a refund for a Forgery if:

(a) the grounds for claiming that the Lot is a Forgery is based primarily on a difference of opinion between us and a third party providing coin grading services;

(b) the grounds for claiming that the Lot is a Forgery is by reason of any damage and/or restoration and/or modification work of any nature;

(c) the description of the Lot in the catalogue was in accordance with generally accepted opinions of numismatic specialists as at the date of publication or the catalogue indicated that there was a conflict of opinion.

(d) it has been proved that the Lot is a Forgery by applying a method that was unavailable or not generally applied within the industry of numismatics as at the date of publication of the catalogue or was disproportionately expensive, in both cases as determined in our absolute discretion.

7.6. If we agree that the Lot is a Forgery then subject to:

(a) you being able to confirm in writing that you can transfer legal and beneficial title to the Lot to us or as directed by us free from all encumbrances or third party claims of any nature; and

(b) the exclusions in Condition 7.7,

then the sale of the Lot will be rescinded so that it is cancelled and we will refund the Purchase Price to you in full.

7.7. Your right to return the Lot and receive a refund of the Hammer Price under the Guarantee is your sole remedy against us, our agents and sub-contractors and/or the Seller for a Forgery. You will not be entitled to claim interest on the amount due to you. Neither we, our agents or sub-contractors nor the Seller shall be liable for costs, expenses, damages or any other liability however it arises relating to a Forgery.

7.8. In accordance with the restriction in Condition 10.2, the benefit of the Guarantee is personal to the original Buyer and is not transferable to a new owner of the Lot or any other person.

8. EXCLUSION OF LIABILITY

8.1. Except where these Conditions expressly state otherwise, no warranty is given to a Buyer concerning a Lot and each Lot is sold as shown with all faults, imperfections, errors of description (including authorship, origin, age, size, condition or value) or lack of authenticity or genuineness and neither we nor the Seller nor any of our agents or sub-contractors will be liable for any damages, costs, expenses or any other liability arising out of the same whether or not caused by negligence.

8.2. Our maximum liability under these Conditions is the amount of the Purchase Price paid by you.

8.3. Neither we nor any of our agents or sub-contractors shall be liable, whether in tort (including negligence or breach of statutory duty), contract, misrepresentation or otherwise:

(a) for loss of profits or business, depletion of goodwill and/or similar losses; loss of contracts; or

(b) any special, indirect, consequential or pure economic loss, costs, damages, charges or expenses.

8.4. We shall not be liable to you or be deemed to be in breach of these Conditions by reason of any delay in performing, or any failure to perform, any of our obligations in the Conditions, if the delay or failure was due to any cause beyond our reasonable control.

8.5. Nothing in these Conditions excludes or limits our liability for any matter which it would be illegal for us to exclude or attempt to exclude under English law or for our fraud or fraudulent misrepresentation.

9. DATA PROTECTION

9.1. By agreeing to these Conditions, a Bidder acknowledges and agrees that we will use personal information of a Bidder for the purpose of the auction and ancillary matters, including providing a Buyer's personal details to any other person where necessary to enforce our rights under these Conditions.

10. GENERAL

10.1. These Conditions and the Seller's Conditions constitute the entire agreement between us. All other terms, warranties and representations, express or implied by statute or otherwise are excluded to the fullest extent permitted by law. No variation to these Conditions shall be legally binding unless agreed in writing by us.

10.2. All rights and benefits granted to a Bidder under these Conditions are personal to him and may not be assigned or in any other way transferred to any other person. Any such assignment or transfer will be invalid and unenforceable against us.

10.3. A notice required or permitted to be given by either of us to the other under these Conditions shall, in the case of a Bidder, be to the last address notified to us and in the case of Baldwin's, shall be to its registered office.

10.4. No failure or delay by us in exercising any of our rights under these Conditions shall be deemed to be a waiver of that right, and no waiver by us of any breach of these Conditions by you shall be considered as a waiver of any subsequent breach of the same or any other provision.

10.5. We may perform our obligations and exercise our respective rights through any of our group companies or assign our rights under these Conditions.

10.6. If any provision of these Conditions is held by any court or other competent authority to be invalid or unenforceable in whole or in part, the validity of the other provisions and the remainder of the provision in question shall not be affected.

10.7. English law shall apply to these Conditions and we both agree to the English courts having exclusive jurisdiction.

11. INTERPRETATION

11.1. In these Conditions:

'Baldwin's', 'auctioneer', 'us' or 'we' means A H Baldwin & Sons Limited;

'Bidder' and 'you' means a person making, attempting to make or considering making a bid for a Lot including a Buyer;

'Buyer' means the person who makes the highest bid for a Lot which is accepted by the auctioneer and if the person is acting as an agent, will be a reference to its principal only if Baldwin's has accepted the agency in writing;

'Catalogue' means a catalogue, price list or other publication or price list;

'Commission Bid' means an instruction from a Bidder to us to bid on their behalf at the auction;

'Conditions' means these conditions of sale and any other additional terms notified to Bidders in writing in a Catalogue or otherwise (which includes notices displayed at the Auction) or as agreed in writing between Baldwin's and the Bidder;

'Guarantee' has the meaning set out in Condition 7.1;

'Hammer Price' means the amount of the highest bid for a Lot accepted by the auctioneer;

'including' or 'include' mean including without limitation and include without limitation, respectively;

'Lot' means any item deposited with us for sale at auction including items described against any Lot number in a Catalogue;

'Purchase Price' means the Hammer Price plus buyer's premium and VAT where applicable;

'Reserve' means a confidential price below which the auctioneer will not sell a Lot or will re-purchase on behalf of the Seller or for the account of Baldwin's. Unless otherwise specified at the time of Lot consignment, this will be set at approximately 80% of the Lot estimate at complete discretion of the auctioneer;

'Seller's Conditions' means the terms and conditions of sale between Baldwin's and a Seller for the sale of a Lot as displayed in the auction room, on our website or available from Baldwin's.

11.2. Headings in these Conditions are for convenience only and shall not affect their interpretation.

Dreweatts¹⁷⁵⁹



AUCTIONS BLOOMSBURY

Forthcoming Auction Highlights Thinking of Selling?



Irving Penn
Cuzco Children, 1948,
Gelatin silver print
Provenance: A gift from Condé Nast to the present owner, 1973
Est. £8,000-12,000

Photographs & Photobooks

Friday 17th May

London 24 Maddox Street, W1S 1PP



Charles Dickens
The Christmas Books
5 vol., first editions, 1843-48
Est. £4,000-6,000

Important Books & Manuscripts

Thursday 30th May

London 24 Maddox Street, W1S 1PP



An emerald and diamond ring.
Sold for £8,600 (March 2013)

Fine Silver & Objects of Vertu

Wednesday 12th June

Newbury Donnington Priory, Donnington RG14 2JE



Clara Peeters
Awaiting title
Est. £20,000-30,000

Old Master & 19th Century Paintings

Tuesday 18th June

Newbury Donnington Priory, Donnington RG14 2JE



Roy Lichtenstein
Shipboard Girl
Off-set lithograph in colours, Signed in pencil
Est. £10,000-15,000

Modern & Contemporary Prints

Thursday 27th June

London 24 Maddox Street, W1S 1PP



A fine George III mahogany and amarillo
serpentine commode, circa 1760
Est. £30,000-50,000

Fine English & Continental Furniture & Works of Art

Wednesday 19th June

Newbury Donnington Priory, Donnington RG14 2JE

For more information on consignments or the forthcoming calendar please contact info@dnfa.com


BALDWIN'S
The Name for Numismatics

Dreweatts

BLOOMSBURY


APEX
The Name for Philatelics



BALDWIN'S

The Name for Numismatics

Auction Number 81

Friday 31 May 2013

The
DAVID FORE
Collection



Coins of British India
(Part 2)

Patterns and Proofs

of British India, The Presidencies and the Native Indian States

**Don't Miss Out - ORDER your copy now at :
www.baldwin.co.uk/the-fore-collection-2.html**



Dreweatts¹⁷⁵⁹

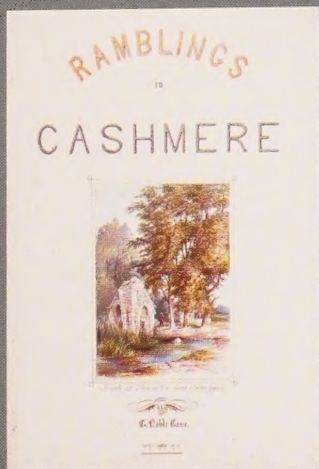


BLOOMSBURY AUCTIONS

Bloomsbury Auctions' 30th Year Anniversary Sale: Important Books and Manuscripts

London: Bloomsbury House, 24 Maddox Street, Mayfair, W1S 1PP

Thursday 30th May 2013



Lt. Col. George Noble Cave (Bengal Staff Corps., 1824-1908)

Rambles in Cashmer, 1867-70

Portfolio of 42 original watercolours with additional pictorial manuscript title, v.s., average 305 x 455mm.

Most mounted on contemporary card supports, captioned in pencil.

Est. £8,000-12,000

Provenance: given to the artist's granddaughter by her uncle, the artist's son, and thence by descent.

For more information please contact info@dnfa.com | +44(0) 20 7495 9494

Dreweatts & Bloomsbury Auctions is a UK 'top 5' auctioneer of fine art and collectibles. We have the broadest and most regular calendar of specialist sales, providing vendors and buyers with access to market leading advice in any number of collecting fields. Together with Apex Philatelics and A.H. Baldwin & Sons, Dreweatts & Bloomsbury Auctions are a part of Noble Investments (UK) PLC, the only UK stock exchange listed auctioneer of fine art, antiques, jewellery, watches and collectibles.



BALDWIN'S
The Name for Numismatics

Dreweatts¹⁷⁵⁹



BLOOMSBURY
AUCTIONS

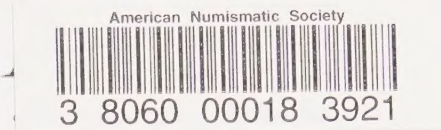


APEX
The Name for Philatelics

Part of the Noble Investments (UK) PLC Group



BALDWIN'S
The Name for Numismatics



Forthcoming Auctions:

May 2013

Baldwin's Auction 78, The David Fore Collection of British Indian Coins (Part One)	London, 7 May 2013
Baldwin's Auction 79, The Bentley Collection (Part 3), British Sovereigns	London, 8 May 2013
Baldwin's Auction 80, British and World Coins and Medals	London, 8 May 2013
Baldwin's Islamic Coin Auction 24, The Horus Collection of Islamic Coins	London, 9 May 2013
Baldwin's Auction 81, The David Fore Collection of British Indian Coins (Part Two)	London, 31 May 2013

June 2013

Baldwin's Summer Argentum Auction, Coins and Medals British and World Coins, Commemorative Medals, in conjunction with the London Coin Fair, Holiday Inn Consignment Deadline : 2 May 2013	London, 1 June 2013
The Military Sale, Medals and Militaria, held in conjunction with Dreweatts This auction will be held at Maddox Street, London Consignment Deadline: 15 April 2013	London, 5 June 2013
Apex Philatelic, Postal Auction 124, General Stamps Consignment Deadline: 31 March 2013	Postal, 20 June 2013

July 2013

Apex Philatelic, Public Auction 125, General Stamps Consignment Deadline: 1 May 2013	Lingfield, 21 July 2013
---	-------------------------

August 2013

Baldwin's Hong Kong Coin Auction 55, Far Eastern and World Coins, Medals and Banknotes Consignment Deadline : 15 June 2013	Hong Kong, 22 August 2013
---	---------------------------

September 2013

Baldwin's Auction 82, Ancient and World Coins and Commemorative Medals The Official Coinex Auction Consignment Deadline : 15 July 2013	London, 25 September 2013
Baldwin's Auction 83, The David Fore Collection of British Indian Coins (Part Three) The Official Coinex Auction	London, 26 September 2013
Apex Philatelic, Postal Auction 126, General Stamps Consignment Deadline : 7 July 2013	Postal, 26 September 2013

November 2013

Baldwin's Autumn Argentum Auction, Coins and Medals British and World Coins, Commemorative Medals, in conjunction with the London Coin Fair, Holiday Inn Consignment Deadline : 1 September 2013	London, 2 November 2013
Apex Philatelic, Postal Auction 127, General Stamps Consignment Deadline : 28 August 2013	Lingfield, 17 November 2013

December 2013

Apex Philatelic, Postal Auction 128, General Stamps Consignment Deadline : 10 November 2013	Postal, 12 December 2013
--	--------------------------

January 2014

Baldwin's The New York Sale XXXII, Ancient and World Coins	New York, 8 January 2014
Baldwin's The New York Sale XXXIII, Russian Coins and Medals	New York, 9 January 2014

[N.B: These dates are provisional only and may be subject to change. Additional dates may be added later.]

For enquiries with items for direct purchase or inclusion in one of our auctions please contact us at auctions@baldwin.co.uk or on +44 (0)20 7930 9808.



The
DAVID FORE
Collection



BALDWIN'S
The Name for Numismatics



Drewatts & Bloomsbury
Auctions



APEX
The Name for Philatelists

A Noble Investments (UK) PLC Company